

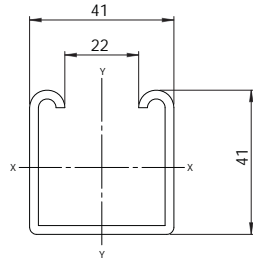
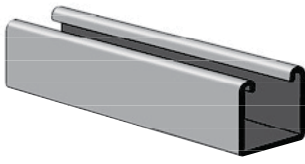


ZETA

Strut

Single Channel

ZS 100

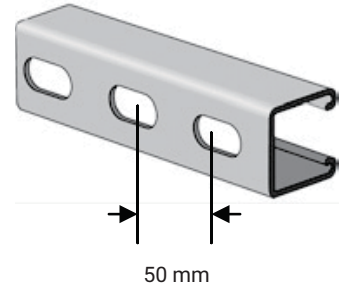


Size: 41mm x 41 mm
Thickness: 2.5mm
Weight: 2.84Kg./m.

PERFORATION PATTERNS

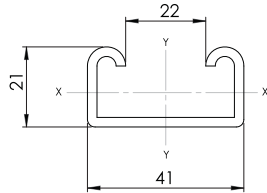
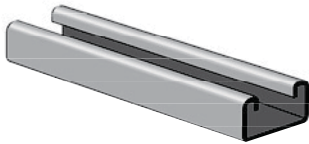
ZS 101

Slot size: 14 x 22 mm



Single Channel

ZS 300

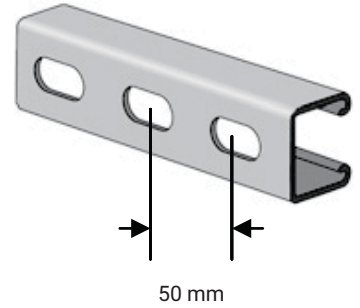


Size: 21mm x 41 mm
Thickness: 2.5 mm
Weight: 1.95 Kg./m.

Perforation Patterns

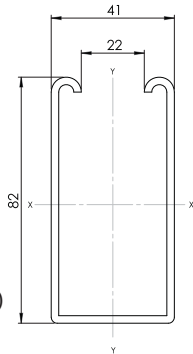
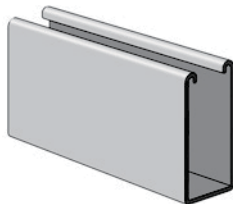
ZS 301

Slot size: 14 x 22 mm



Single Channel

ZS 500

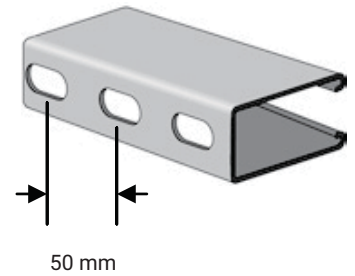


Size: 82 mm x 41 mm)
Thickness: 2.5mm
Weight: 4.55Kg./m.

Perforation Patterns

ZS 501

Slot size: 14 x 22 mm



Note: Special slot size are upon request

SECTION DATA

	A	X-X Axis			Y-Y Axis		
		I	S	r	I	S	r
Part no.	in ² (cm ²)	in ⁴ (cm ⁴)	in ³ (cm ³)	in. (cm.)	in ⁴ (cm ⁴)	in ³ (cm ³)	in. (cm.)
ZS 100	0.562(3.62)	0.191(7.96)	0.212(3.48)	0.583(1.48)	0.239(9.99)	0.295(4.84)	0.653(1.66)
ZS 300	0.386(2.49)	0.32(1.33)	0.673(1.10)	0.288(0.73)	0.140(5.84)	0.173(2.83)	0.603(1.53)
ZS 500	0.900(5.81)	1.120(46.63)	0.647(10.61)	1.116(2.83)	0.436(18.14)	0.536(8.79)	0.696(1.77)

A: Section Area

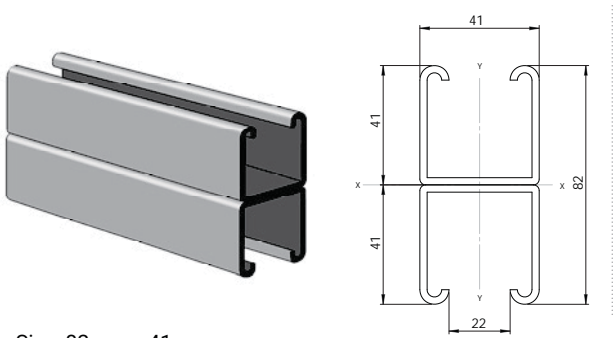
I: Moment of Inertia

S: Section Modulus

r: Gyration Radius

Double Channel

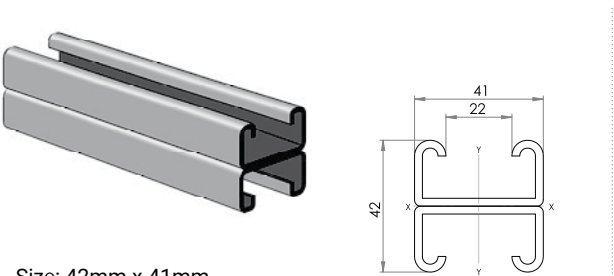
ZS 200



Size: 82mm x 41mm
 Thickness: 2.5mm
 Weight: 5.69Kg./m.

Double Channel

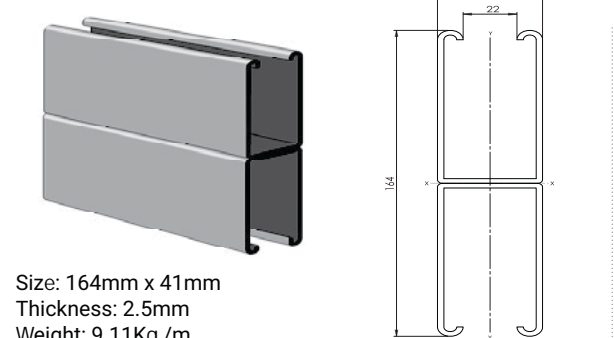
ZS 400



Size: 42mm x 41mm
 Thickness: 2.5mm
 Weight: 3.9 Kg./m.

Double Channel

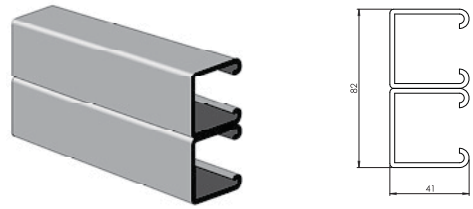
ZS 600



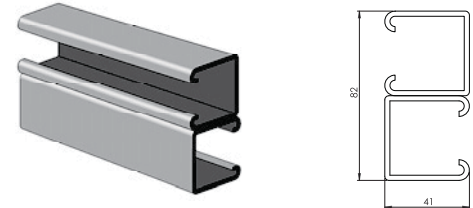
Size: 164mm x 41mm
 Thickness: 2.5mm
 Weight: 9.11Kg./m.

COMBINATION PATTERNS

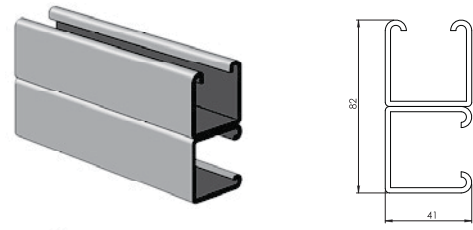
ZS 201



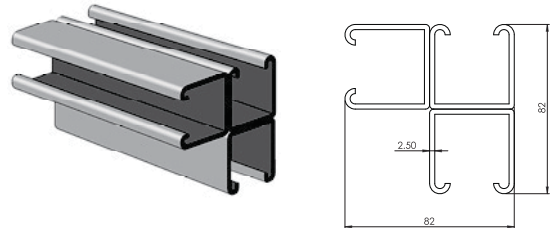
ZS 202



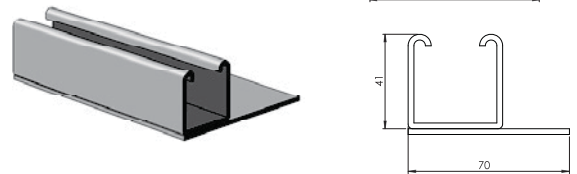
ZS 203



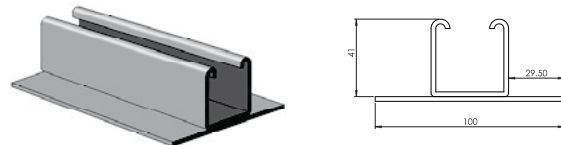
ZS 204



ZS 205



ZS 206



SECTION DATA

	A	X-X Axis			Y-Y Axis		
		I	S	r	I	S	r
Part no.	in ² (cm ²)	in ⁴ (cm ⁴)	in ³ (cm ³)	in. (cm.)	in ⁴ (cm ⁴)	in ³ (cm ³)	in. (cm.)
ZS 200	1.124(7.25)	0973(40.51)	0.599(9.81)	0.931(2.36)	0.479(19.97)	0.591(9.68)	0.653(1.66)
ZS 400	0.773(4.99)	0.152(6.31)	0.187(3.06)	0.443(1.13)	0.281(11.69)	0.346(5.67)	0.603(1.53)
ZS 600	1.800(11.61)	6.393(266.1)	1.967(32.24)	1.885(4.79)	0.871(36.27)	1.072(17.58)	0.696(1.77)

A: Section Area

I: Moment of Inertia

S: Section Modulus

r: Gayration Radius

Single Channel

Part No.	Max. U.Load lbs (N)	Deflection in (mm)	U.Load at Deflection		Maximum Column Load Applied At C.G.				Loaded At Slot Face lbs (N)
			1/240 span lbs (N)	1/360 span lbs (N)	K=0.65 lbs (N)	K=0.8 lbs (N)	K=1.0 lbs (N)	K=1.2 lbs (N)	
12" Beam / Column									
ZS 100	2160(11610)	.014(.35)	2160(11610)	2160(11610)	10598(47142)	10454(46502)	10222(45470)	9950(44260)	4276(19120)
ZS 300	1079(4799)	.026(.66)	1079(4799)	1079(4799)	8543(38001)	8407(37396)	8205(36497)	7989(35537)	3162(14065)
ZS 500	-	-	-	-	-	-	-	-	-
18" Beam / Column									
ZS 100	2269(10090)	.031(.79)	2269(10090)	2269(10090)	10253(45607)	9950(44260)	9481(42173)	8955(39834)	4153(18473)
ZS 300	700(3113)	0.05(1.4)	622(2766)	505(2246)	8103(36044)	7933(35288)	7088(31529)	5966(26538)	3165(14078)
ZS 500	-	-	-	-	-	-	-	-	-
24" Beam / Column									
ZS 100	1702(7571)	.056(1.4)	1702(7571)	1702(7571)	9801(43597)	9311(41417)	8582(38174)	7801(34700)	3993(17762)
ZS 300	539(2397)	.11(2.7)	506(2251)	337(1499)	7879(35047)	7519(33446)	6521(29007)	5397(24007)	2775(12255)
ZS 500	5130(22820)	.03(.73)	5130(22820)	5130(22820)	8446(37569)	8190(36341)	7783(34620)	7311(32521)	4477(19914)
36" Beam / Column									
ZS 100	1135(5049)	.126(3.20)	1135(5049)	899(3999)	8676(38593)	7801(34700)	6595(28336)	5392(23985)	3589(15964)
ZS 300	360(1601)	.24(6.1)	225(1001)	150(667)	6653(29594)	5397(24007)	3616(16085)	2511(11169)	2152(9572)
ZS 500	3488(15520)	.065(1.7)	3488(15520)	3488(15520)	7838(34865)	7311(32521)	6503(28927)	5612(24963)	4183(18607)
48" Beam / Column									
ZS 100	851(3785)	.22(5.69)	758(3372)	505(2246)	7401(32921)	6193(27548)	4718(20987)	3791(16863)	3118(13869)
ZS 300	270(1201)	.43(10.8)	126(560)	84(373)	4785(21285)	3178(14136)	2034(9047)	1412(6281)	1560(6939)
ZS 500	2616(11640)	.12(3.0)	2616(11640)	2616(11640)	7053(31373)	6214(27641)	4988(22188)	3816(16974)	3783(16827)
60" Beam / Column									
ZS 100	681(3029)	.35(8.91)	485(2157)	323(1437)	6093(27103)	4718(20987)	3616(16085)	2936(13060)	2631(11703)
ZS 300	216(961)	.67(16.9)	81(360)	54(240)	3081(13705)	2034(9047)	1302(5791)	904(4021)	1159(5155)
ZS 500	2093(9310)	.18(4.6)	2093(9310)	2093(9310)	6140(27312)	4988(22188)	3595(15991)	2790(12410)	3279(14586)
72" Beam / Column									
ZS 100	567(2522)	.51(12.83)	337(1499)	225(1001)	4869(21658)	3791(16863)	2936(13060)	2381(10591)	2264(10071)
ZS 300	180(800)	.96(24.4)	56(249)	37(164)	2139(9515)	1412(6281)	904(4021)	-	891(3963)
ZS 500	1744(7760)	.26(6.6)	1744(7760)	1325(5890)	5146(22860)	3816(16974)	2790(12410)	2213(9844)	2444(10871)
84" Beam / Column									
ZS 100	486(2162)	.69(17.4)	248(1103)	165(734)	4037(17957)	3176(14127)	2461(10947)	1980(8807)	1984(8825)
ZS 300	154(685)	1.31(33.2)	41(182)	28(124)	1572(6992)	1038(4617)	664(2953)	-	704(3131)
ZS 500	1495(6650)	.36(9.1)	1460(6494)	974(4332)	4133(18384)	3063(13625)	2291(10191)	1846(8211)	1897(8438)
96" Beam / Column									
ZS 100	425(1890)	.90(22.8)	190(845)	126(560)	3456(15373)	2728(16583)	2101(9346)	1671(7433)	1761(7833)
ZS 300	135(600)	1.71(43.4)	32(142)	21(93)	1203(5351)	794(3532)	-	-	570(2535)
ZS 500	1308(5820)	.47(11.9)	1118(4970)	745(3310)	3398(15115)	2564(11405)	1953(8687)	1591(7077)	1532(6814)
108" Beam / Column									
ZS 100	378(1681)	1.14(28.8)	150(667)	100(445)	3022(13442)	2381(10591)	1816(8078)	1426(6343)	1575(7006)
ZS 300	120(534)	2.16(54.9)	25(111)	17(75)	951(4230)	-	-	-	470(2090)
ZS 500	1163(5170)	.59(15.0)	884(3930)	589(2620)	2886(12837)	2213(9844)	1708(7597)	1401(6232)	1273(5662)
120" Beam / Column									
ZS 100	340(1512)	1.40(35.6)	121(538)	81(360)	2680(11921)	2101(9346)	1583(7041)	1228(5462)	1418(6307)
ZS 300	108(480)	2.67(67.7)	20(89)	13(58)	770(3425)	-	-	-	394(1752)
ZS 500	1046(4650)	.73(18.6)	716(3180)	477(2120)	2514(11183)	1953(8687)	1522(6770)	1251(5565)	1081(4808)

Double Welded Channel

Part No.	Max. U.Load lbs (N)	Deflection in (mm)	U.Load at Deflection		Maximum Column Load Applied At C.G.				Loaded At Slot Face lbs (N)
			1/240 span lbs (N)	1/360 span lbs (N)	K=0.65 lbs (N)	K=0.8 lbs (N)	K=1.0 lbs (N)	K=1.2 lbs (N)	
12" Beam / Column									
ZS 100	2610 (11610)	0.14(.35)	2610 (11610)	2610*(11610)	21677(96424)	21625(96193)	21539(95810)	21433(95339)	7002(19120)
ZS 300	1270 (5649)	.006(.15)	1270 (5649)	1270*(5649)	19425(86407)	19160(85228)	18777(83524)	18363(81682)	5290(23531)
ZS 500	-	-	-	-	-	-	-	-	-
18" Beam / Column									
ZS 100	2610 (11610)	0.14(.35)	2610 (11610)	2610 (11610)	21551(95863)	21433(95339)	21239(94476)	21081(93417)	6959(30955)
ZS 300	1270 (5649)	.14(.35)	1270 (5649)	1270*(5649)	19644(88005)	19510(87404)	18807(84225)	17465(78243)	5897(26418)
ZS 500	-	-	-	-	-	-	-	-	-
24" Beam / Column									
ZS 100	2610 (11610)	0.14(.35)	2610 (11610)	2610 (11610)	21373(95072)	21164(94142)	20819(92607)	20397(90730)	6898(30684)
ZS 300	1270 (5649)	.05(1.3)	1270 (5649)	1270 (5649)	18144(80708)	17444(77595)	16412(73004)	15275(67946)	4955(22041)
ZS 500	5130 (22820)	.005(.13)	5130 (22820)	5130 (22820)	17778(79080)	17701(78738)	17572(78164)	17416(77470)	8267(36773)
36" Beam / Column									
ZS 100	2610 (11610)	0.14(.35)	2610 (11610)	2610 (11610)	20866(92816)	20397(90730)	19619(87269)	18669(83004)	6728(29927)
ZS 300	1013(4506)	.14(3.6)	1013(4506)	719(3198)	16547(73605)	15275(67946)	13376(59499)	11243(50011)	4496(19999)
ZS 500	5130 (22820)	.02(.45)	5130*(22820)	5130*(22820)	17598(78244)	17416(77470)	17127(76184)	16774(74614)	8189(364(26))
48" Beam / Column									
ZS 100	2405(10693)	.12(3.2)	2405(10693)	2405(10693)	20157(89663)	19322(85948)	17940(79801)	16251(72288)	6496(28895)
ZS 300	759(3376)	.25(6.4)	607(2700)	404(1797)	14667(65242)	12692(56457)	9683(43072)	6780(30159)	3963(17628)
ZS 500	5130 (22820)	.04(1.0)	5130 (22820)	5130 (22820)	17327(77074)	17016(75691)	16503(73409)	15876(70620)	8079(35937)
60" Beam / Column									
ZS 100	1924(8558)	.19(4.9)	1942(8558)	1640(7295)	19244(85601)	17940(79801)	15781(70197)	13141(58454)	5340(23753)
ZS 300	608(2704)	.39(9.9)	388(1726)	259(1152)	12516(55674)	9683(43072)	6248(27792)	339(19301)	3383(15048)
ZS 500	5130 (22820)	.08(2.0)	5130*(22820)	5130 (22820)	16988(75566)	16503(73409)	15701(69841)	14721(65478)	7727(34371)
72" Beam / Column									
ZS 100	1603(7130)	.28(7.1)	1603(7130)	1139(5066)	18129(80642)	16251(72288)	13141(58454)	9524(42365)	3968(17650)
ZS 300	506(2251)	.56(14.3)	270(1201)	180(800)	10084(44856)	6780(30159)	4339(19301)	3013(13402)	2799(12450)
ZS 500	5130*(22820)	.13(3.4)	5130*(22820)	5130*(22820)	16574(73724)	15876(70620)	14721(65482)	13310(59206)	6169(27401)
84" Beam / Column									
ZS 100	1374(6112)	.38(9.7)	1255(5582)	837(3732)	16812(74783)	14255(63409)	10076(44820)	6998(31128)	3028(13469)
ZS 300	434(1930)	.77(19.5)	198(881)	132(587)	7545(33562)	4981(22156)	3188(14181)	2214(9848)	2337(10395)
ZS 500	4552(20255)	.19(4.8)	4552(20255)	4552(20255)	16084(71545)	15135(67324)	13563(60331)	11642(51786)	-
96" Beam / Column									
ZS 100	1202(5347)	.50(12.7)	961(4275)	640(2847)	15291(68018)	11951(53160)	7715(34318)	5357(23829)	2359(10493)
ZS 300	380(1690)	1.00(25.4)	152(676)	101(449)	5777(25697)	3814(16965)	2441(10858)	1695(7540)	1973(8776)
ZS 500	3983(17723)	.25(6.3)	3983(17723)	3983(17723)	15520(69036)	14279(63516)	12226(54384)	9717(43223)	4045(7993)
108" Beam / Column									
ZS 100	1069(4755)	.63(16.1)	759(3376)	506(2251)	13568(60353)	9524(42365)	6096(27116)	4233(18829)	1867(8305)
ZS 300	338(1503)	1.27(32.2)	120(534)	80(356)	4564(20301)	3013(13402)	1928(8576)	1339(5956)	1684(7491)
ZS 500	3541(15752)	.32(8.1)	3541(15752)	3353(14924)	14880(66189)	13310(59206)	10712(47649)	7725(34362)	3337(14844)
120" Beam / Column									
ZS 100	962(4284)	.78(19.9)	615(2735)	410(1824)	11642(51786)	7715(34318)	4937(21961)	3429(15253)	1512(6726)
ZS 300	304(1352)	1.56(39.7)	97(431)	65(289)	3697(16445)	2441(10858)	1562(6948)	-	1452(6459)
ZS 500	3187(14173)	.39(9.9)	3187(14173)	2716(12084)	14164(63004)	1226(54384)	9019(40118)	6257(27832)	2784(12384)

ZETA Brackets are fabricated from standard Channels welded to Back plates.

On ordering specify type, size and finishing in addition to part no.

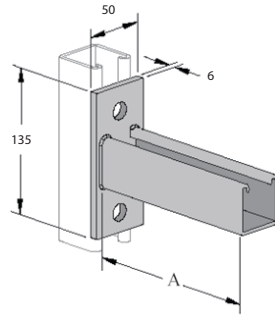
Material :
 (HR) : Hot rolled Steel sheet :
 in accordance to ASTM A1011
 Back Plate: ASTM A575-81
 (AL) : Aluminum :
 In accordance to ASTM B209
 (SS) : Stainless Steel :
 to ASTM A240 (Type 304 & 316)

Finishes :
 (HDG) : Hot Dip Galvanized
 in Acc. To ASTM A123.
 (BS EN ISO 1461)
 (EP) : Epoxy Painted.
 (PC) : Electrostatic Industrial
 Powder Coating.

Flat Base Single Channel Cantilever

ZB 101

Channel section is made of ZS 100
 Safety Factor : 2.5

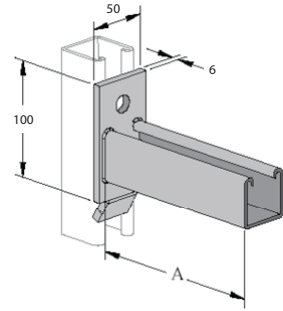


Part No.	Size A"(mm)	Uniform Load Lb(KN)	Weight/Pc Lbs (Kg)
ZB101-6	6" (152.4)	1920(8.5)	1.5 (0.69)
ZB101-9	9" (228.6)	1280(5.7)	1.9 (0.88)
ZB 101-12	12" (304.8)	960 (4.3)	2.3 (1.05)
ZB 101-14	14" (355.6)	800 (3.6)	2.7 (1.24)
ZB 101-16	16" (406.4)	730 (3.2)	3.1 (1.42)
ZB 101-18	18" (457.2)	640 (2.8)	3.4 (1.56)
ZB 101-24	24" (609.6)	480 (2.1)	4.5 (2.04)
ZB 101-30	30" (762.0)	315 (1.4)	5.4 (2.42)

Guided Base single channel cantilever

ZB 102

Channel section is made of ZS 100
 Safety Factor : 2.5

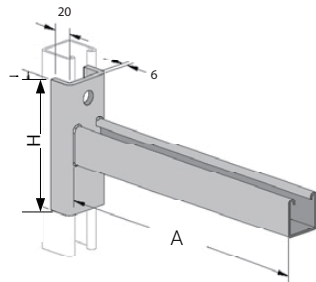


Part No.	Size A"(mm)	Uniform Load Lb(KN)	Weight/Pc Lbs (Kg)
ZB102-6	6" (152.4)	1182(5.3)	1.4(0.65)
ZB 102-9	9" (228.6)	670(2.98)	1.8(0.82)
ZB102-12	12" (304.8)	610(2.7)	2.2(1.0)
ZB102-14	14" (355.6)	560(2.49)	2.6(1.2)
ZB102-16	16" (406.4)	470(2.1)	3.0(1.4)
ZB102-18	18" (457.2)	410 (1.8)	3.3(1.5)
ZB102-24	24" (609.6)	292 (1.3)	4.4(2.0)

Wraparound Base Single Channel Cantilever

ZB 103

Channel section is made of ZS 100
 Safety Factor : 2.5

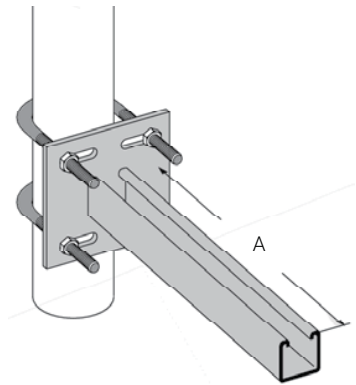


Part No.	Size A"(mm)	Uniform Load Lb(KN)	Weight/Pc Lbs (Kg)
ZB 103-6	6" (152.4)	1600(7.12)	1.9 (0.86)
ZB 103-9	9" (228.6)	1200(5.34)	2.4 (1.09)
ZB103-12	12" (304.8)	800(3.56)	2.9 (2.32)
ZB103-14	14" (355.6)	720(3.20)	3.3 (1.50)
ZB103-16	16" (406.4)	650(2.89)	3.7 (1.68)
ZB103-18	18" (457.2)	600(2.67)	4.3 (1.95)
ZB103-24	24" (609.6)	450(2.00)	5.3 (2.40)

Pipe Mounted Single Channel Cantilever

ZB 103

Channel section is made of ZS 100
 Safety Factor : 2.5
 U-Bolt to be order separately as per pipe size.

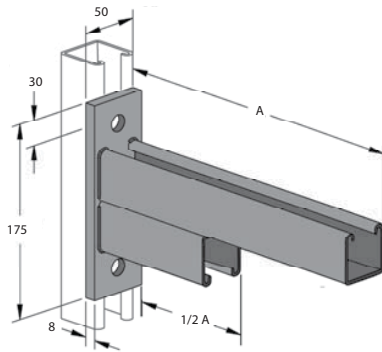


Part No.	Length A	Load Rating lbs. (KN)
ZB104-09	9" (228.6)	800 (3.55)
ZB104-12	12" (304.8)	800 (3.55)
ZB104-18	18" (457.2)	450 (2.00)
ZB104-24	24" (609.6)	450 (2.00)

Braced Channel Cantilever

ZB 105

Channel section is made of ZS 200
Safety Factor : 2.5

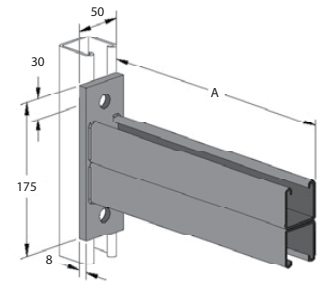


Part No.	Size A"(mm)	Uniform Load Lb(KN)	Weight/Pc. Lbs (Kg)
ZB 105-12	12" (304.8)	1220(5.42)	4.4(2.02)
ZB 105-18	18" (457.2)	960(4.26)	6.1(2.79)
ZB 105-24	24" (609.6)	710(3.15)	7.7(3.56)
ZB 105-30	30" (762.0)	540(2.40)	9.3(4.25)
ZB 105-36	36" (914.4)	420(1.86)	11.0(5.04)

Flat Base Double Channel Cantilever

ZB 106

Channel section is made of ZS 200
Safety Factor : 2.5

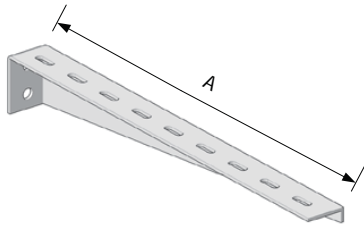


Part No.	Size A"(mm)	Uniform Load Lb(KN)	Weight/ Pc. Lbs (Kg)
ZB 106-6	6" (152.4)	2500(11.1)	2.1(0.96)
ZB 106-9	9" (228.6)	2100(9.33)	3.4(1.5)
ZB 106-12	12" (304.8)	1660(7.37)	4.8(2.2)
ZB 106-18	18" (457.2)	1100(4.88)	6.7(3.1)
ZB 106-24	24" (609.6)	840(3.72)	8.6(3.9)
ZB 106-30	30" (762.0)	665(2.95)	10.4(4.7)
ZB 106-36	36" (914.4)	550(2.44)	12.4(5.6)
ZB 106-42	42" (1066.8)	465(2.06)	14.4(6.5)

Shelf Bracket

ZB 107

Safety Factor: 2.5
Thickness : 2.6mm
For mounting on concrete walls and channels.

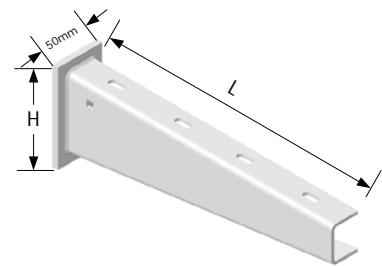


Part No.	Size A	Uniform Load lbs. (KN)	Weight /Pc. Lbs. (Kg)
ZB 107-6	6" (152.4)	352 (1.57)	0.6 (0.27)
ZB 107-9	9" (228.6)	330 (1.47)	0.9 (0.40)
ZB 107-12	12" (304.8)	308 (1.37)	1.5 (0.67)
ZB 107-18	18" (457.2)	242 (1.08)	2.5 (1.11)
ZB 107-24	24" (609.6)	220 (0.98)	3.9 (1.74)
ZB 107-30	30" (762.0)	176 (0.78)	5.4 (2.4)

Wall Mounted Bracket

ZB 108

Load Rating: 674 lbs (3.0 KN)
Safety Factor: 2.5
For mounting on concrete walls and channels.

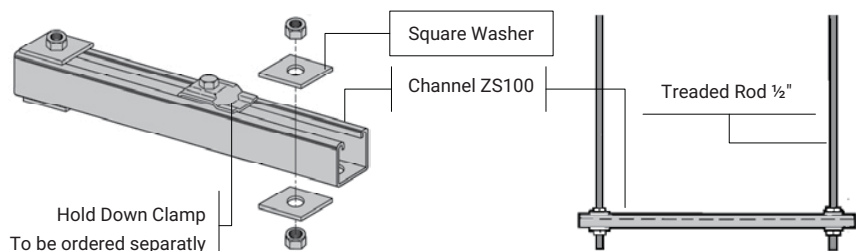


Part No.	Length L(mm)	Height H(mm)	Weight /Pc lbs. (Kg)
ZB 108-01	110	60	0.49 (0.22)
ZB 108-02	160	65	0.74 (0.33)
ZB 108-03	210	70	0.90 (0.40)
ZB 108-04	310	80	1.42 (0.63)
ZB 108-05	410	80	2.00 (0.89)
ZB 108-06	510	90	2.92 (1.30)
ZB 108-07	610	100	3.51 (1.56)
ZB 108-08	910	195	12.36 (5.50)

Trapeze Hanger Support Kit

ZB 109

Trapeze kits provide the components required for a single trapeze support in one package. Each kit include:
a- Slotted Channel cut to required length
b- 4 pcs. 1/2" Hex. nut.
c- 4 pcs. square washer
1/2" threaded rod to be ordered separately.
On order, Specify material and Finishing.



I-Support

On ordering specify type, size and nishing in addition to part no.

Finishes :

- HDG): Hot Dip Galvanized in Acc. To ASTM A123. and BS EN ISO 1461
- EP) : Epoxy Painted.
- PC) : Electrostatic Industrial powder Coating.

I-Support With Plate

ZZ 101

Mounted on horizontal surface and steel girders.
Load rating: 1124 lbs (5KN) for L=600mm

Part No .	Length L(mm)	Weight /Pc lbs. (Kg)
ZZ 101-20	200	4.67 (2.08)
ZZ 101-30	300	5.96 (2.65)
ZZ 101-40	400	7.24 (3.22)
ZZ 101-50	500	8.52 (3.79)
ZZ 101-60	600	9.80 (4.36)
ZZ 101-70	700	11.08 (4.93)
ZZ 101-80	800	12.36 (5.50)
ZZ 101-90	900	13.64 (6.07)
ZZ 101-100	1000	14.92 (6.64)
Increments of 100mm		
ZZ 101-200	2000	27.73 (12.34)

I-Support

ZZ 102

Mounted on horizontal and inclined concrete surface and steel girders.
Load rating: 1124 lbs (5KN) for L=600mm

Part No .	Length L(mm)	Weight /Pc lbs. (Kg)
ZZ 102-30	300	3.84 (1.71)
ZZ 102-40	400	5.12 (2.28)
ZZ 102-50	500	6.40 (2.85)
ZZ 102-60	600	7.69 (3.42)
ZZ 102-70	700	8.97 (3.99)
ZZ 102-80	800	10.25 (4.56)
ZZ 102-90	900	11.53 (5.13)
ZZ 102-100	1000	12.81 (5.70)
ZZ 102-150	1500	19.21 (8.55)
ZZ 102-200	2000	27.73 (12.34)
ZZ 102-300	3000	38.43 (17.10)
ZZ 102-600	6000	76.85 (34.20)

Head Plates

ZZ 103
Wt. : 3.48 lbs (1.55 Kg.)

ZZ 104
Wt. : 3.66 lbs (1.63 Kg.)

Mounting Clamps

ZZ 105
Wt. : 0.72 lbs (0.32 Kg.)

ZZ 106
Wt. : 0.52 lbs (0.23 Kg.)

ZZ 107
Wt. : 0.51 lbs (0.22 Kg.)

ZZ 108
Wt. : 1.84 lbs (0.82 Kg.)

H= 10,15,20 & 25 mm

I-Support Joints

ZZ 109
Wt.:1.96 lbs (0.87 Kg.)

ZZ 110
Wt.:1.98 lbs (0.88 Kg.)

I-Support Bracket

Mounted on I-Support and height is fully adjustable.
Load rating: 674 lbs (3KN)

Part no .	Length L (mm)	Heigh H(mm)	Weight/Pc lbs (Kg)
ZZ 111-01	110	60	0.67 (0.30)
ZZ 111-02	160	65	0.83 (0.37)
ZZ 111-03	210	70	0.99 (0.44)
ZZ 111-04	310	80	1.75 (0.78)
ZZ 111-05	410	80	2.25 (1.00)
ZZ 111-06	510	90	3.15 (1.40)
ZZ 111-07	610	100	3.78 (1.68)

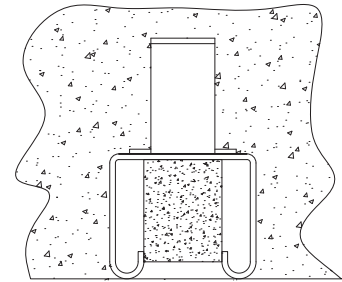
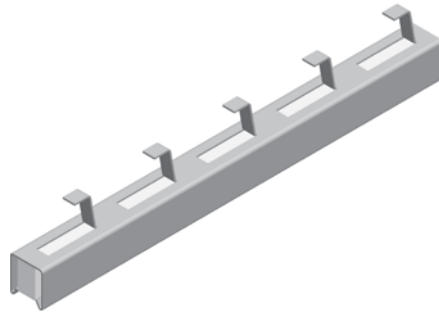
ZETA TRAY offers wide selection of concrete inserts for use in concrete ceiling, walls and floors. Concrete inserts are manufactured from standard channels with styrene foam filler to stop seepage of concrete into cavity of the channel.

Standard length available is 10 ft with tolerance of 3/16" in length. Other sizes available in any length from 10" to 20 ft. Concrete inserts are available in Hot dip galvanized steel to ASTM A123 (EN ISO 1461) and Stainless Steel 316 or 304 .

Type : ZC

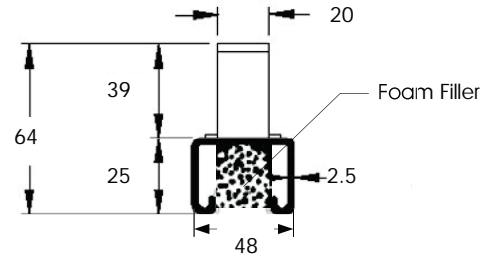
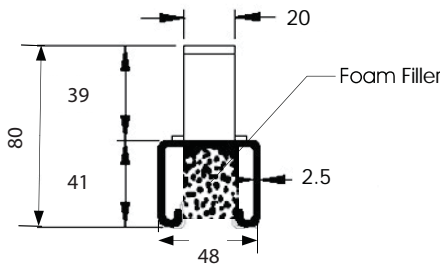
Continuous Concrete Inserts

Concrete inserts to be nailed or anchored every 16-24" to forms. Recommended Load : For ZC 11 2000 lbs (8.9)KN/Foot For ZC 22 1500 lbs (6.7)KN/Foot With safety factor of 3. Loading considered in concrete strength 3000 psi



ZC 11

ZC 22



Part No.	Length	Weight/Pc. Lbs (Kg)
ZC 11-12	12" (305)	2.2(1.0)
ZC 11-20	20" (508)	3.5(1.6)
ZC 11-40	40"(1016)	6.8(3.1)
ZC 11-60	60"(1524)	10.1(4.6)
ZC 11-84	84"(2133)	14.1(6.1)
ZC 11-120	120"(3048)	20.1(9.1)

Part No.	Length	Weight/Pc. Lbs (Kg)
ZC 22-12	12" (305)	1.6(0.7)
ZC 22-20	20" (508)	2.4(1.1)
ZC 22-40	40"(1016)	4.6(2.1)
ZC 22-60	60"(1524)	6.9(3.1)
ZC 22-84	84"(2133)	9.6(4.3)
ZC 22-120	120"(3048)	13.7(6.2)

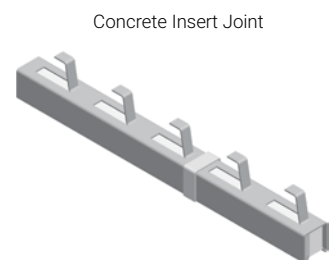
Other Sizes are available upon request

Accessories

Part No.	Channel Size
EC - 41	41 x 41
EC - 21	41 x 21



PVC End Cap



Concrete Insert Joint

ZF-200

Square Flat Plate

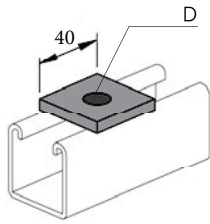
ZF-201

Two Hole Flat Plate

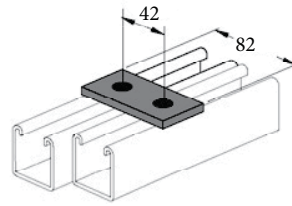
ZF-202

Two Hole Flat Plate

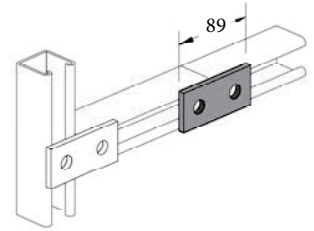
Part no	D		Weight lbs. (kg.)
	in	(mm)	
ZF-200-A	3/8"	(9.5)	.18 (0.08)
ZF-200-B	7/16"	(11.1)	.18 (0.08)
ZF-200-C	9/16"	(14.2)	.17 (0.08)
ZF-200-D	11/16"	(17.4)	.16 (0.07)
ZF-200-E	13/16"	(20.6)	.15 (0.07)



Weight: 0.36 lbs. (0.16 Kg.)



Weight: 0.38 lbs. (0.17 Kg.)



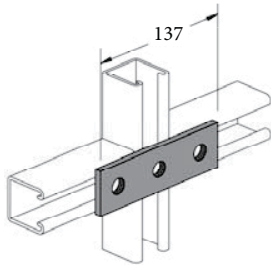
ZF-203 Three Hole Flat Plate

ZF-204 Four Hole Flat Plate

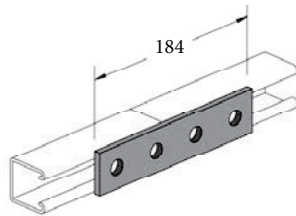
ZF-205 Five Hole Flat Plate

ZF-206 Four Hole Square Plate

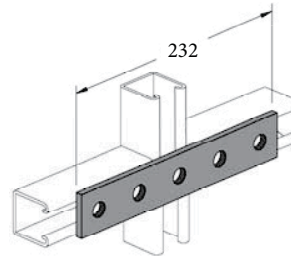
Weight: 0.55 lbs. (0.25 Kg.)



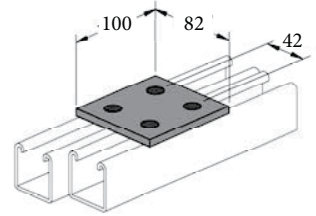
Weight: 0.75 lbs. (0.34 Kg.)



Weight: 0.95 lbs. (0.43 Kg.)



Weight: 0.72 lbs. (0.33 Kg.)



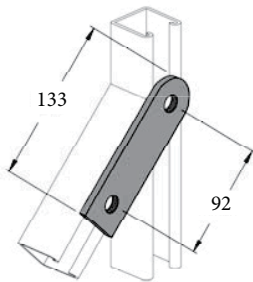
ZF-207 Two Hole Swivel Plate

ZF-208 Three Hole Swivel Plate

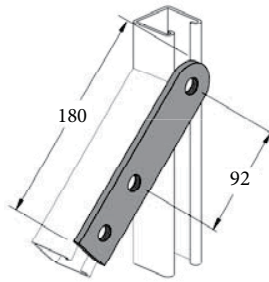
ZF-209 Three Hole Corner Plate

ZF-210 Four Hole Corner Plate

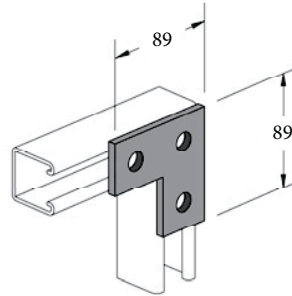
Weight: 0.55 lbs. (0.25 Kg.)



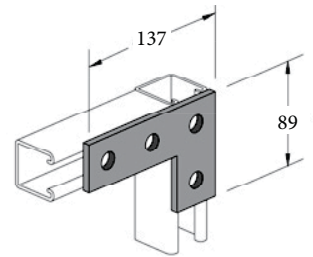
Weight: 0.75 lbs. (0.34 Kg.)



Weight: 0.69 lbs. (0.32 Kg.)



Weight: 0.77 lbs. (0.35 Kg.)



Design Data :

All ZETA Fittings (except indicated) follow the following dimensions:

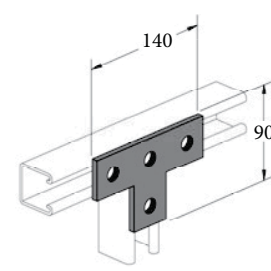
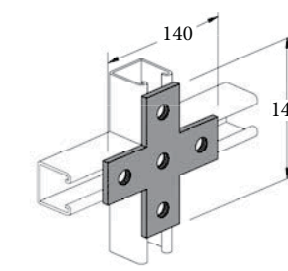
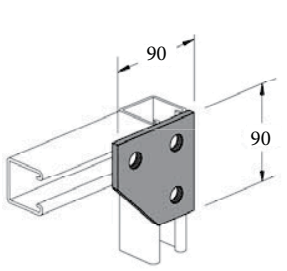
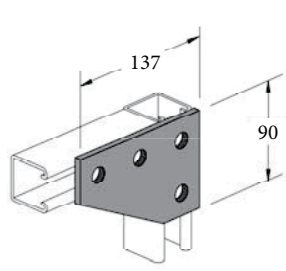
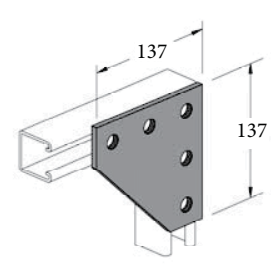
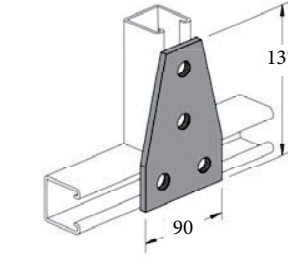
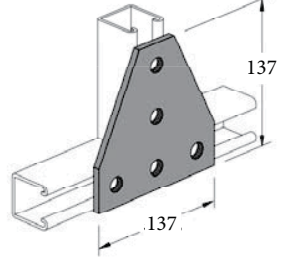
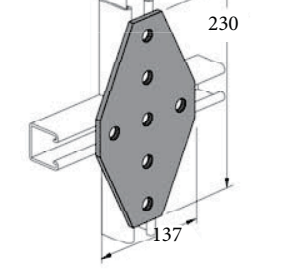
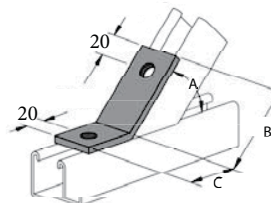
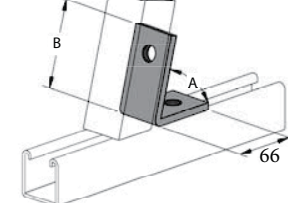
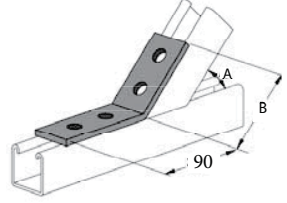
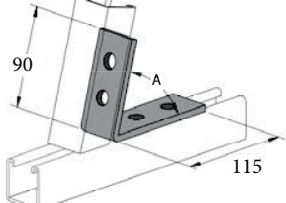
Material Width:	40 mm
Material Thickness:	6 mm
Hole Size:	14 mm
Hole Spacing (C-C):	48 mm
Hole Spacing From end of fittings:	20 mm

Material :

(HR) Hot rolled Steel sheet :	in accordance to ASTM A907
(PG) Pregalvanized Steel:	in accordance to ASTM A-525 G90
(AL) Aluminum :	In accordance to ASTM B209
(SS) Stainless Steel :	to ASTM A240 (Type 304 & 316)

Finishes :

(HDG) Hot Dip Galvanized To	ASTM A123 (BS EN 146)
(ZP) Zinc Plating To	ASTM B63
(EP) Epoxy Painted.	
(PC) Electrostatic Industrial Powder Coating	

ZF-211 Tee Flat Plate	ZF-212 Cross Flat Plate	ZF-213 Three Hole Angle Plate	ZF-214 Four Hole Angle Plate
<p>Weight: 0.78 lbs. (0.35 Kg.)</p> 	<p>Weight: 1.02 lbs. (0.46 Kg.)</p> 	<p>Weight: 0.68 lbs. (0.31 Kg.)</p> 	<p>Weight: 0.72 lbs. (0.33 Kg.)</p> 
ZF-215 Five Hole Corner Plate	ZF-216 Four Hole Connector Plate	ZF-217 Five Hole Connector Plate	ZF-218 Seven Hole Connector Plate
<p>Weight: 1.46 lbs. (0.66 Kg.)</p> 	<p>Weight: 1.02 lbs. (0.46 Kg.)</p> 	<p>Weight: 1.41 lbs. (0.64 Kg.)</p> 	<p>Weight: 2.32 lbs. (1.05 Kg.)</p> 
ZF-301 Two Hole Open Angle Plate	ZF-302 Two Hole Closed Angle Plate	ZF-303 Four Hole Open Angle Plate	ZF-304 Four Hole Closed Angle Plate
<p>Weight: 0.55 lbs. (0.25 Kg.)</p>  <p>A : From 15 to 75 Deg.</p>	<p>Weight: 0.55 lbs. (0.25 Kg.)</p>  <p>A : From 15 to 75 Deg.</p>	<p>Weight: 0.73 lbs. (0.33 Kg.)</p>  <p>A : From 15 to 75 Deg.</p>	<p>Weight: 0.73 lbs. (0.33 Kg.)</p>  <p>A : From 15 to 75 Deg.</p>

Design Data :

All ZETA Fittings (except indicated) follow the following dimensions

Material Width: 40 mm
 Material Thickness: 6 mm
 Hole Size: 14 mm
 Hole Spacing (C-C): 48 mm
 Hole Spacing From end of fittings: 20 mm

Material :

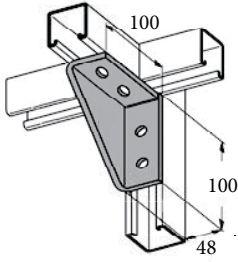
(HR) Hot rolled Steel sheet : in accordance to ASTM A907
 (PG) Pregalvanized Steel: in accordance to ASTM A-525 G90
 (AL) Aluminum : In accordance to ASTM B209
 (SS) Stainless Steel : to ASTM A240 (Type 304 & 316)

Finishes :

(HDG) Hot Dip Galvanized To ASTM A123 (BS EN 146)
 (ZP) Zinc Plating To ASTM B63
 (EP) Epoxy Painted.
 (PC) Electrostatic Industrial Powder Coating

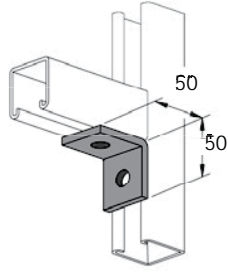
ZF-401 One Hole Angle Connector

Weight: 1.32 lbs. (0.56 Kg.)



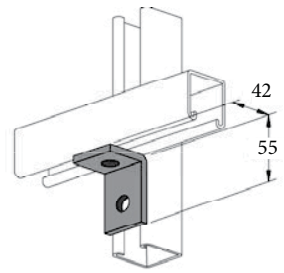
ZF-402 Two Hole Angle Connector

Weight: 0.36 lbs. (0.16 Kg.)



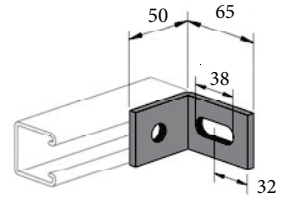
ZF-403 Two Hole Angle Connector

Weight: 0.36 lbs. (0.16 Kg.)



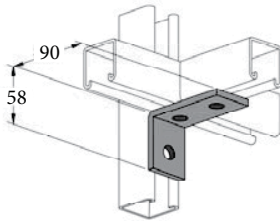
ZF-404 Two Hole Adj. Angle Connector

Weight: 0.38 lbs. (0.17 Kg.)



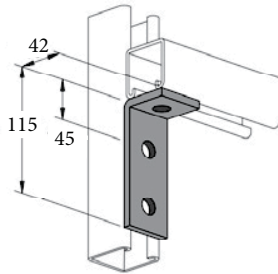
ZF-405 Three Hole Angle Connector

Weight: 0.55 lbs. (0.25 Kg.)



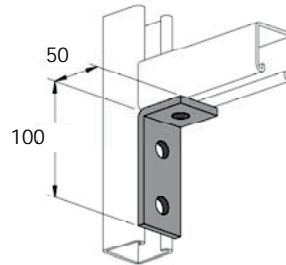
ZF-406 Three Hole Angle Connector

Weight: 0.55 lbs. (0.25 Kg.)



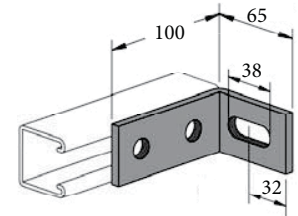
ZF-407 Three Hole Angle Connector

Weight: 0.55 lbs. (0.25 Kg.)



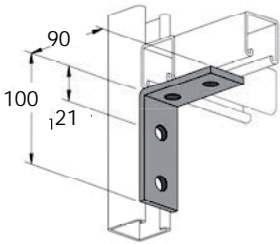
ZF-408 Three Hole Adj. Angle Connector

Weight: 0.66 lbs. (0.30 Kg.)



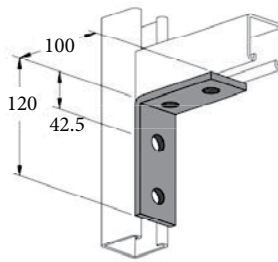
ZF-409 Four Hole Angle Connector

Weight: 0.76 lbs. (0.34 Kg.)



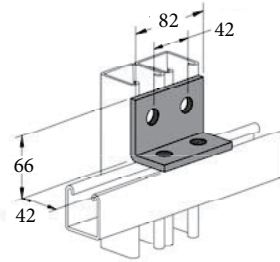
ZF-410 Four Hole Angle Connector

Weight: 0.76 lbs. (0.34 Kg.)



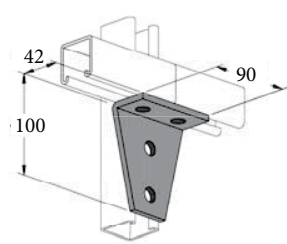
ZF-411 Four Hole Corner Plate

Weight: 0.71 lbs. (0.32 Kg.)



ZF-412 Four Hole Angle Plate

Weight: 1.00 lbs. (0.45 Kg.)



Design Data :

All ZETA Fittings (except indicated) follow the following dimensions

Material Width: 40 mm
 Material Thickness: 6 mm
 Hole Size: 14 mm
 Hole Spacing (C-C): 48 mm
 Hole Spacing From end of fittings: 20 mm

Material :

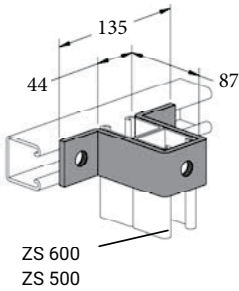
(HR) Hot rolled Steel sheet : in accordance to ASTM A907
 (PG) Pregalvanized Steel: in accordance to ASTM A-525 G90
 (AL) Aluminum : In accordance to ASTM B209
 (SS) Stainless Steel : to ASTM A240 (Type 304 & 316)

Finishes :

(HDG) Hot Dip Galvanized To ASTM A123 (BS EN 146)
 (ZP) Zinc Plating To ASTM B63
 (EP) Epoxy Painted.
 (PC) Electrostatic Industrial Powder Coating

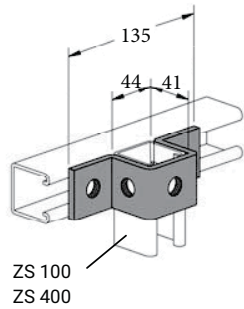
ZF-501 U- Connector

Weight: 1.26 lbs. (0.57 Kg.)



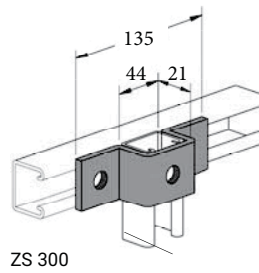
ZF-502 U- Connector

Weight: 0.84 lbs. (0.38 Kg.)



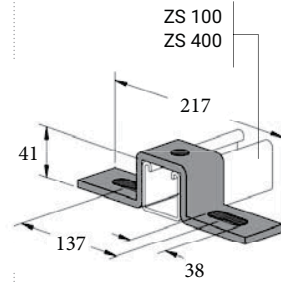
ZF-503 U- Connector

Weight: 0.68 lbs. (0.31 Kg.)



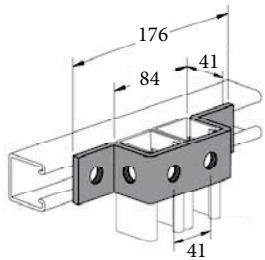
ZF-504 Adjustable U- Connector

Weight: 1.22 lbs. (0.55 Kg.)



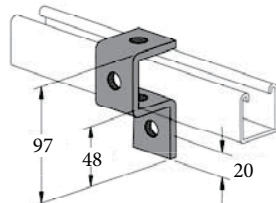
ZF-505 U- Connector

Weight: 1.02 lbs. (0.46 Kg.)



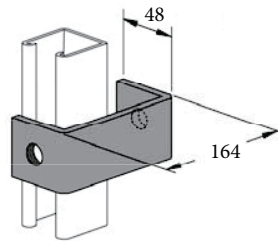
ZF-506 U- Connector

Weight: 0.75 lbs. (0.34 Kg.)



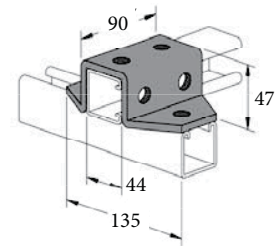
ZF-507 U-Hanger

Weight: 0.98 lbs. (0.49 Kg.)



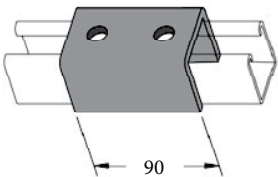
ZF-508 U- Connector

Weight: 1.70 lbs. (0.77 Kg.)



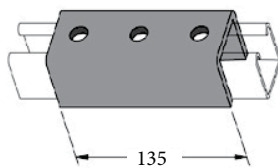
ZF-509 Two Hole U- Connector

Weight: 1.20 lbs. (0.54 Kg.)



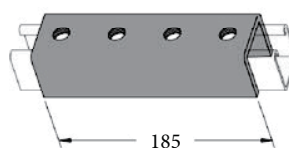
ZF-510 Three Hole U- Connector

Weight: 1.95 lbs. (0.88 Kg.)



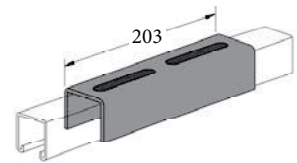
ZF-511 Four Hole U- Connector

Weight: 2.60 lbs. (1.18 Kg.)



ZF-512 Two Slots U- Connector

Weight: 1.97 lbs. (0.89 Kg.)



Design Data :

All ZETA Fittings (except indicated) follow the following dimensions

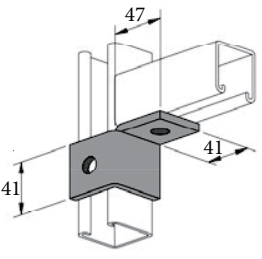
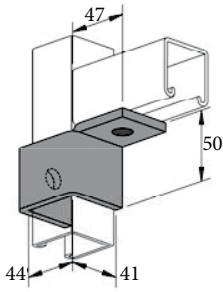
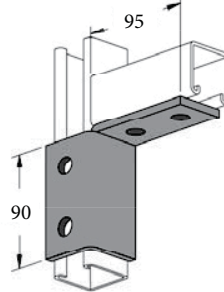
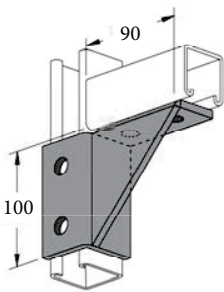
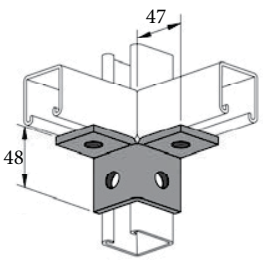
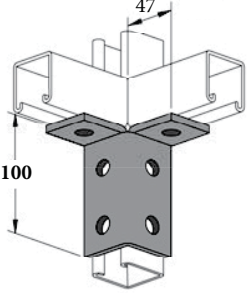
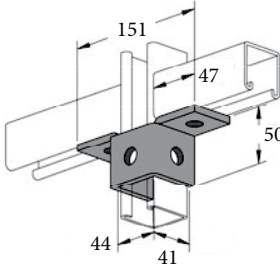
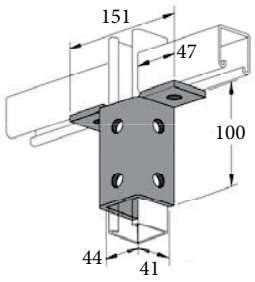
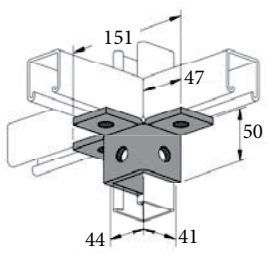
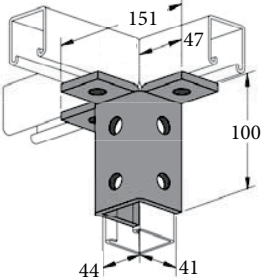
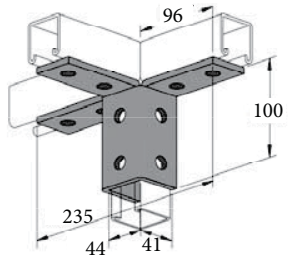
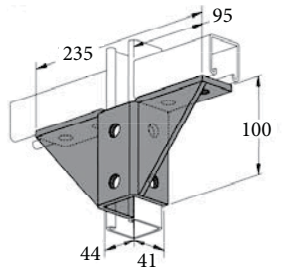
- Material Width: 40 mm
- Material Thickness: 6 mm
- Hole Size: 14 mm
- Hole Spacing (C-C): 48 mm
- Hole Spacing From end of fittings: 20 mm

Material :

- (HR) Hot rolled Steel sheet : in accordance to ASTM A907
- (PG) Pregalvanized Steel: in accordance to ASTM A-525 G90
- (AL) Aluminum : In accordance to ASTM B209
- (SS) Stainless Steel : to ASTM A240 (Type 304 & 316)

Finishes :

- (HDG) Hot Dip Galvanized To ASTM A123 (BS EN 146)
- (ZP) Zinc Plating To ASTM B63
- (EP) Epoxy Painted.
- (PC) Electrostatic Industrial Powder Coating

ZF-601 3- Hole One sided Connector	ZF-602 Wraparound One Sided	ZF-602 4-Holes One Sided Connector	ZF-604 4-Holes Gusset Connector
Weight: 0.54 lbs. (0.24 Kg.)	Weight: 0.77 lbs. (0.35 Kg.)	Weight: 1.20 lbs. (0.54 Kg.)	Weight: 1.72 lbs. (0.78 Kg.)
			
ZF-605 4- Hole Two Sided Connector	ZF-606 6-Holes Two Sided Connector	ZF-607 5-Holes Two Sided Connector	ZF-608 8-Holes Two Sided Connector
Weight: 0.74 lbs. (0.34 Kg.)	Weight: 1.12 lbs. (0.51 Kg.)	Weight: 0.93 lbs. (0.42 Kg.)	Weight: 1.44 lbs. (0.65 Kg.)
			
ZF-609 6-Holes Three Sided Connector	ZF-610 9-Holes Three Sided Connector	ZF-611 12-Holes Three Sided Connector	ZF-612 10-Holes Two Sided Connector
Weight: 1.10 lbs. (0.50 Kg.)	Weight: 1.72 lbs. (0.78 Kg.)	Weight: 2.26 lbs. (1.02 Kg.)	Weight: 2.70 lbs. (1.22 Kg.)
			

Design Data :

All ZETA Fittings (except indicated) follow the following dimensions

Material Width:	40 mm
Material Thickness:	6 mm
Hole Size:	14 mm
Hole Spacing (C-C):	48 mm
Hole Spacing From end of fittings:	20 mm

Material :

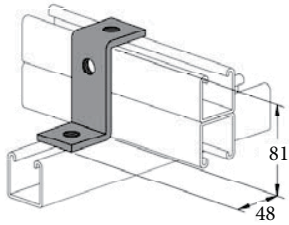
(HR) Hot rolled Steel sheet :	in accordance to ASTM A907
(PG) Pregalvanized Steel:	in accordance to ASTM A-525 G90
(AL) Aluminum :	In accordance to ASTM B209
(SS) Stainless Steel :	to ASTM A240 (Type 304 & 316)

Finishes :

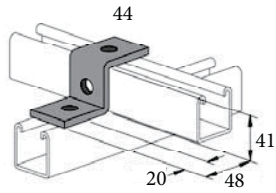
(HDG) Hot Dip Galvanized To	ASTM A123 (BS EN 146)
(ZP) Zinc Plating To	ASTM B63
(EP) Epoxy Painted.	
(PC) Electrostatic Industrial Powder Coating	

ZF-701 Z- Support Large ZF-702 Z- Support Medium ZF-703 Z- Support Small ZF-704 Z- Support Offset

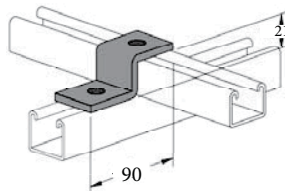
Weight: 0.66 lbs. (0.30 Kg.)



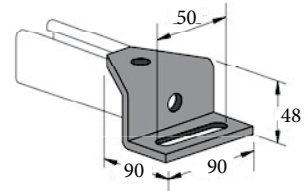
Weight: 0.54 lbs. (0.24 Kg.)



Weight: 0.45 lbs. (0.20 Kg.)

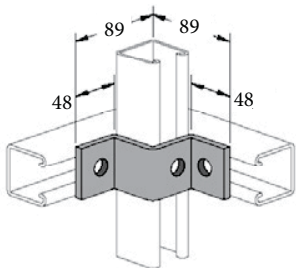


Weight: 1.00 lbs. (0.45 Kg.)

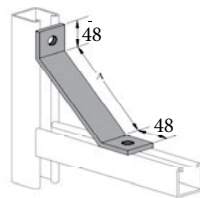


ZF-705 Corner Support ZF-706 Channel Brace Support ZF-707 End Angle Connector ZF-708 Offset Support

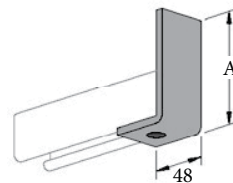
Weight: 0.63 lbs. (0.29 Kg.)



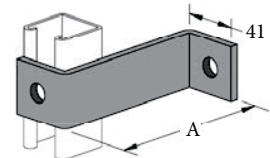
A mm	Weight lbs. (kg.)
300	1.60(0.72)
450	2.20(1.00)
600	2.27(1.23)



A mm	Weight lbs. (kg.)
100	0.59(0.27)
150	0.81(0.37)
200	1.02(0.46)

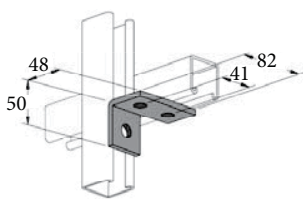


A mm	Weight lbs. (kg.)
100	0.80(0.36)
125	0.90(0.41)
150	0.98(0.44)
175	1.12(0.51)
200	1.23(0.56)

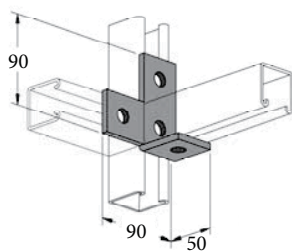


ZF-709 Angle Connector ZF-710 Angle Tee Connector ZF-711 Angle Tee Connector ZF-712 Angle Cross Connector

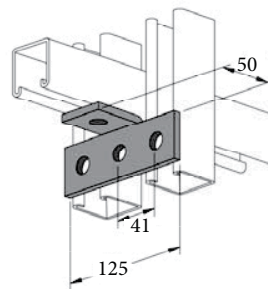
Weight: 0.52 lbs. (0.24 Kg.)



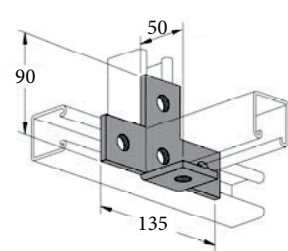
Weight: 0.78 lbs. (0.35 Kg.)



Weight: 0.70 lbs. (0.32 Kg.)



Weight: 1.02 lbs. (0.46 Kg.)



Design Data :

All ZETA Fittings (except indicated) follow the following dimensions

- Material Width: 40 mm
- Material Thickness: 6 mm
- Hole Size: 14 mm
- Hole Spacing (C-C): 48 mm
- Hole Spacing From end of fittings: 20 mm

Material :

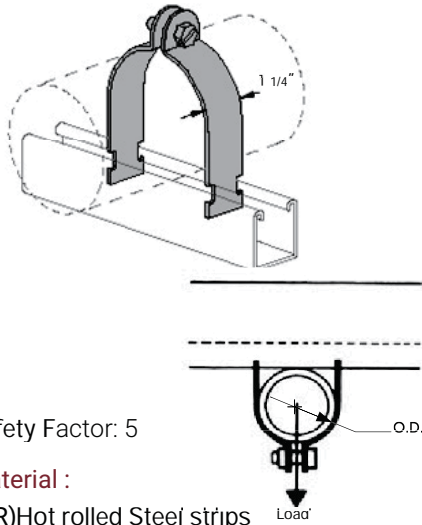
- (HR) Hot rolled Steel sheet : in accordance to ASTM A907
- (PG) Pregalvanized Steel: in accordance to ASTM A-525 G90
- (AL) Aluminum : In accordance to ASTM B209
- (SS) Stainless Steel : to ASTM A240 (Type 304 & 316)

Finishes :

- (HDG) Hot Dip Galvanized To ASTM A123 (BS EN 146)
- (ZP) Zinc Plating To ASTM B63
- (EP) Epoxy Painted.
- (PC) Electrostatic Industrial Powder Coating

ZH 201

C-Clamp



Safety Factor: 5

Material :

(HR) Hot rolled Steel strips
in acc.to ASTM A575-81

(SS) Stainless Steel :
to ASTM A240 (Type 304 & 316)

Finishes :

(PG) Pregalvanized Steel:
in Acc. To ASTM B633

(HDG) Hot Dip Galvanized in Acc.
To ASTM A123.(BS EN 1461)

(EP) Epoxy Painted.

(PC) Electrostatic Industrial Powder
Coating.

Rigid Conduit Clamp

Part No	Conduit Size		O.D Size		Thickness		Load Rating	
	ANSI	BS	mm	Ga.	mm	lbs.	KN	
ZH 201-01	1/2	20	21	16	1.6	400	1.78	
ZH 201-02	3/4	25	26	14	1.9	600	2.67	
ZH 201-03	1	32	33	14	1.9	600	2.67	
ZH 201-04	1 1/4	-	42	14	1.9	600	2.67	
ZH 201-05	1 1/2	-	48	12	2.6	800	3.56	
ZH 201-06	2	-	60	12	2.6	800	3.56	
ZH 201-07	2 1/2	-	73	12	2.6	800	3.56	
ZH 201-08	3	-	89	12	2.6	800	3.56	
ZH 201-09	3 1/2	-	101	11	3.0	1000	4.45	
ZH 201-10	4	-	114	11	3.0	1000	4.45	
ZH 201-11	4 1/2	-	127	11	3.0	1000	4.45	
ZH 201-12	5	-	141	11	3.0	1000	4.45	
ZH 201-13	6	-	168	11	3.0	1000	4.45	

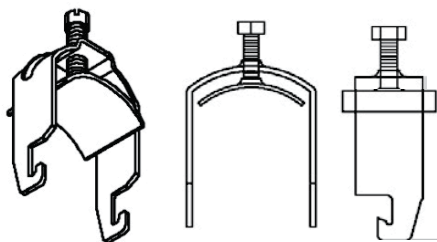
EMT Conduit Clamp

Part No	Conduit Size		O.D Size		Thickness		Load Rating	
	in	mm	Ga.	mm	lbs.	KN		
ZH 201-21	1/2	17.9	16	1.6	400	1.78		
ZH 201-22	3/4	18.9	16	1.6	400	1.78		
ZH 201-23	1	19.9	14	1.9	600	2.67		
ZH 201-24	1 1/4	20.9	14	1.9	600	2.67		
ZH 201-25	1 1/2	21.9	12	2.6	800	3.56		
ZH 201-26	2	22.9	12	2.6	800	3.56		

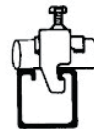
* When Ordering , Please State Part no., Material and Finishing.

ZH 202

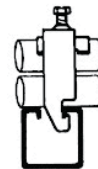
U-Clamps



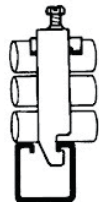
Version 1



Version 2



Version 3



Material :

(HR) Hot rolled Steel sheet :
in acc.to ASTM A575-81

(SS) Stainless Steel :
to ASTM A240 (Type 304 & 316)

(AL) Aluminum : In Acc. To ASTM B 209

Finishes :

(PG) Pregalvanized Steel: in Acc. To
ASTM B63

(HDG) Hot Dip Galvanized: To
ASTM A123 (BS EN 1461)

(EP) Epoxy Painted.

(PC) Electrostatic Industrial Powder
Coating.

Rigid Conduit Clamp

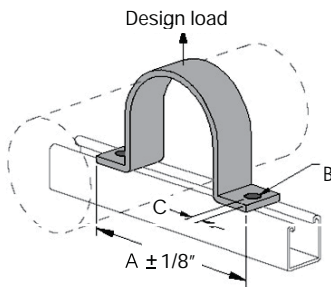
Part No.	O.D. of Cable or Pipe (mm)	Thickness		Weight/Pc.	
		Ga. (mm)	lbs	(kg)	
ZH 202-17	12 - 16	14 (1.5)	0.06	(0.03)	
ZH 202-22	16 - 22	14 (1.5)	0.07	(0.03)	
ZH 202-27	22 - 28	14 (1.9)	0.12	(0.05)	
ZH 202-35	28 - 34	14 (1.9)	0.15	(0.07)	
ZH 202-43	34 - 40	14 (1.9)	0.19	(0.08)	
ZH 202-50	46 - 52	14 (1.9)	0.20	(0.09)	
ZH 202-62	52 - 58	14 (2.6)	0.35	(0.16)	
ZH 202-75	64 - 70	14 (2.6)	0.41	(0.18)	
ZH 202-92	70 - 76	14 (2.6)	0.72	(0.32)	
ZH 202-103	76 - 85	14 (2.6)	0.88	(0.39)	
ZH 202-115	90 - 100	14 (2.6)	1.01	(0.45)	

* When Ordering , Please State Part no, Material, Finishing and Version.

ZH 203

Pipe & Conduit Strap Clamp

Safety Factor: 5

**Material :**

- (HR) Hot rolled Steel strips: in Acc.to ASTM A575-8
 (SS) Stainless Steel: to ASTM A240 (Type 304 & 316)
 (AL) Aluminum : In Acc. To ASTM B 209

Finishes

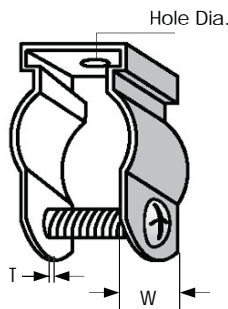
- (PG) Pregalvanized Steel: in Acc. To ASTM B633
 (HDG) Hot Dip Galvanized To ASTM A123 (BS EN 1461)
 (EP) Epoxy Painted.
 (PC) Electrostatic Industrial Powder Coating.

Part No.	Pipe OD (mm)	A (mm)	B (mm)	C (mm)	Material Size (mm)	Load Rating		Weight/Pc Kg
						lbs	KN	
ZH 203-01	21	84	8	15	40 x 3	500	2.22	0.10
ZH 203-02	27	95	8	15	40 x 3	500	2.22	0.13
ZH 203-03	34	98	8	15	40 x 3	500	2.22	0.14
ZH 203-04	42	126	11	20	40 x 4	1000	4.45	0.24
ZH 203-05	48	136	11	20	40 x 4	1000	4.45	0.26
ZH 203-06	60	146	11	20	40 x 4	1000	4.45	0.30
ZH 203-07	76	184	14	25	40 x 4	1000	4.45	0.38
ZH 203-08	89	196	14	25	40 x 4	1000	4.45	0.42
ZH 203-09	102	209	14	25	40 x 4	1000	4.45	0.46
ZH 203-10	114	226	14	26	40 x 4	1000	4.45	0.50
ZH 203-11	140	261	14	28	40 x 4	1000	4.45	0.60
ZH 203-12	168	286	14	28	40 x 4	1000	4.45	0.68

ZH 204

Conduit Hanger

Safety Factor: 3

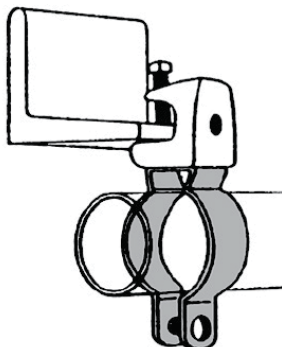
**Material :**

- (HR) Hot rolled Steel strips: in Acc.to ASTM A575-8
 (SS) Stainless Steel: to ASTM A240 (Type 304 & 316)

Finishes

- (PG) Pregalvanized Steel: in Acc. To ASTM B633
 (HDG) Hot Dip Galvanized To ASTM A123 (BS EN 1461)
 (EP) Epoxy Painted.
 (PC) Electrostatic Industrial Powder Coating.

Installed With Beam Clamp to be ordered separately



Part No.	Pipe Size		Hole Dia.		W		Thickness		Load Rating		Weight/Pc. lbs (kg)
	Rigid	EMT	in	(mm)	in	(mm)	Ga.	(mm)	lbs	(kN)	
ZH 204-02	1/2	1/2	9/32	(7.1)	3/4	(19.0)	16	(1.5)	500	(2.23)	0.06 (0.03)
ZH 204-03	3/4	3/4	9/32	(7.1)	3/4	(19.0)	16	(1.5)	500	(2.23)	0.07 (0.03)
ZH 204-04	1	1	9/32	(7.1)	3/4	(19.0)	16	(1.5)	500	(2.23)	0.08 (0.04)
ZH 204-05	1 1/4	1 1/2	9/32	(7.1)	7/8	(22.2)	18	(1.2)	500	(2.23)	0.10 (0.04)
ZH 204-06	1 1/2	-	11/32	(8.7)	7/8	(22.2)	18	(1.2)	750	(3.34)	0.10 (0.04)
ZH 204-07	2	2	11/32	(8.7)	1	(25.4)	16	(1.5)	750	(3.34)	0.17 (0.08)
ZH 204-08	2 1/2	2 1/2	11/32	(8.7)	1 1/4	(31.7)	16	(1.5)	750	(3.34)	0.25 (0.11)
ZH 204-09	3	3	11/32	(8.7)	1 1/4	(31.7)	16	(1.5)	800	(3.56)	0.33 (0.15)
ZH 204-10	3 1/2	3 1/2	11/32	(8.7)	1 1/4	(31.7)	16	(1.5)	800	(3.56)	0.36 (0.16)
ZH 204-11	4	4	11/32	(8.7)	1 1/4	(31.7)	16	(1.5)	1400	(6.23)	0.40 (0.18)

When Ordering , Please State Part no., Material and Finishing.

A complete selection of ZETATRAYBeam Clamps are offered to meet installation requirements without drilling or welding.

On ordering specify type, size and finishing in addition to part no.

Material :

(HR) Hot rolled Steel sheet : in accordance to ASTM A907

(PG) Pregalvanized Steel: in accordance to ASTM A-525 G90

(AL) Aluminum : In accordance to ASTM B209

(SS) Stainless Steel : to ASTM A240 (Type 304 & 316)

Finishes :

(HDG) Hot Dip Galvanized To BS EN 1461

(ZP): Zinc Plating To ASTM B633.

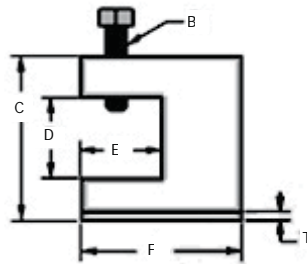
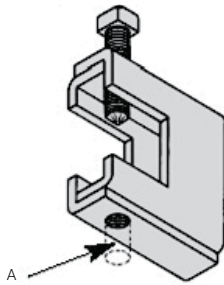
(EP): Epoxy Painted.

(PC): Electrostatic Industrial Powder Coating.

ZF-801

Beam Clamp

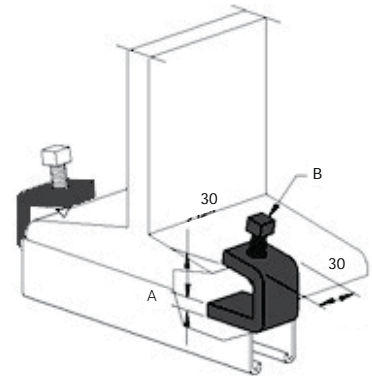
Safety Factor : 5
Screw Torque:
For 1/2": 39 N.m
For 5/8": 79 N.m



Part no.	ZF-801-1	ZF-801-3	ZF-801-3	ZF-801-4	ZF-801-5	ZF-801-6
Rod A	10	10	12	12	12	12
B	10	12	12	12	12	12
C	59	62	62	65	90	90
D	22	22	22	22	43	43
E	30	30	30	30	43	43
F	64	64	64	64	85	85
T	2.5	2.5	2.5	3	3	3
Load	600	1100	1100	1500	1300	1400
lbs. (n)	(267)	(490)	(490)	(668)	(579)	(623)

ZF-802

Beam Clamp



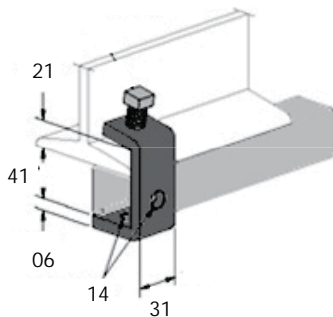
Part no.	A	B	Design Load	Weight/Pc.
			lbs. (N)	Lbs. (kg)
ZF-802-1	6	10	600 (267)	0.40 (0.18)
ZF-802-2	10	12	950 (423)	0.61 (0.28)

Max. Beam Flange Thickness 7/8"

ZF-803

Beam Clamp

Weight : 0.91 lbs.(0.41 Kg.)

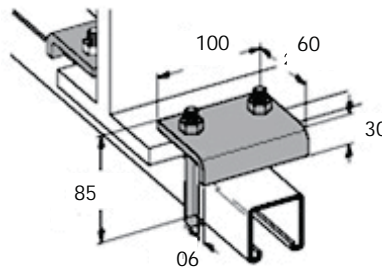


Design Load : 660 lb /pair
Safety Factor : 5
Max. Flange Thickness : 60
Pointed Screws M12 x35mm
Screw Torque : 10 N.m

ZF-804

Beam Clamp

Weight : 0.86 lbs.(0.39 Kg.)

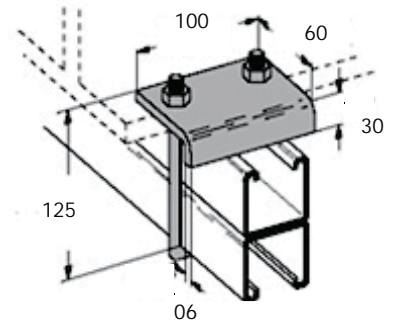


Design Load : 1200 lb /pair
Safety Factor : 5
Max. Flange Thickness :
20 U-Bolt : M10
Screw Torque : 17 N.m

ZF-805

Beam Clamp

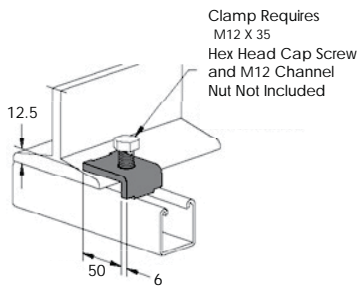
Weight : 0.92 lbs.(0.42 Kg.)



Design Load : 1200 lb /pair
Safety Factor : 5
Max. Flange Thickness :
20 U-Bolt : M10
Screw Torque : 17 N.m

ZF-806

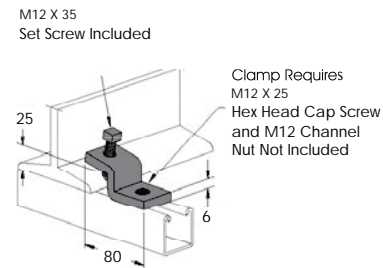
Beam Clamp



Allowable Load : 460 lbs (205 N)
 Safety Factor : 3.0
 Weight : 0.4 lbs (0.18 Kg)

ZF-807

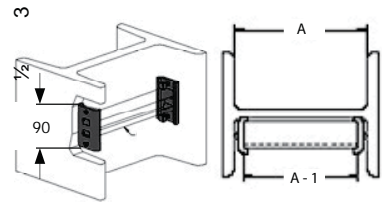
Beam Clamp



Allowable Load : 460 lbs (205 N)
 Safety Factor : 3.0
 Weight : 0.66 lbs (0.29 Kg)

ZF-808

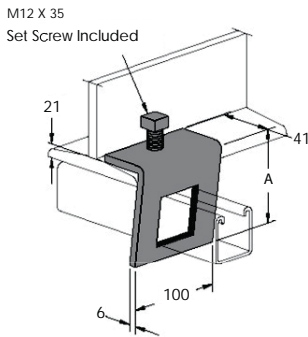
Beam Clamp



Slip Design Load : 800 lbs (356 N)
 Safety Factor : 3.0
 Pointed Screws 4Pcs 3/8"x2"
 Weight : 1.1 lbs (0.49 Kg)

ZF-809

Beam Clamp

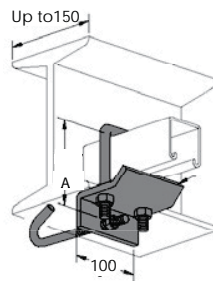


Part no.	Channel Used	A	Weight/Pc. Lbs. (kg)
ZF-809-1	ZS-100	100	1.02 (0.45)
ZF-809-2	ZS-300	70	1.08 (0.48)

Design Load : 740 lb /pair
 Safly Factor : 3.0
 Pointed Screws M12X35
 Torque requirement 10ft.lb

ZF-810

Beam Clamp

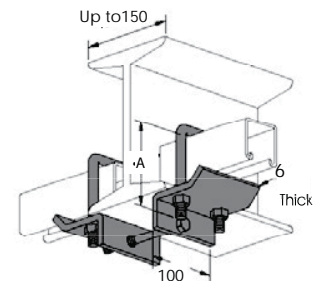


Part no.	Channel Used	A	Weight/Pc. Lbs. (kg)
ZF-810-1	ZS-100 ZS-400	100	1.22 (0.54)
ZF-810-2	ZS-200 ZS-500	125	1.3 (0.58)

U-Bolt M10 Thread With 2-Hex.Nuts.
 J-Hook M10 Thread With Hex. Nut.
 For Other Beam Flange Sizes Please Contact Us.

ZF-811

Beam Clamp



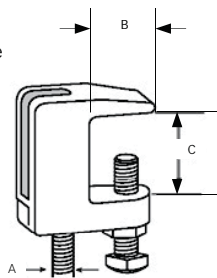
Part no.	Channel Used	A	Weight/Pc. Lbs. (kg)
ZF-811-1	ZS-100 ZS-400	100	2.10 (0.93)
ZF-811-2	ZS-200 ZS-500	12	2.00 (0.89)

U-Bolt M10 Thread With 2-Hex.Nuts.
 J-Hook M10 Thread With Hex. Nut.
 For Other Beam Flange Sizes Please Contact Us.

ZF-812

Malleable Iron Beam Clamp

Safety Factor : 5
 Material: Malleable Iron (ASTM A47)

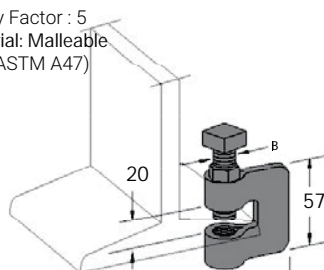


Part no.	A	B	C	Design Load lbs. (N)	Weight/Pc. Lbs. (kg)
ZF-812-1	10	38	20	400 (178)	0.30 (0.14)
ZF-812-2	12	25	20	700 (311)	0.47 (0.21)
ZF-812-3	10	25	30	500 (222)	0.54 (0.24)
ZF-812-4	12	25	30	700 (311)	0.51 (0.23)

ZF-813

Malleable Iron Beam Clamp

Safety Factor : 5
 Material: Malleable Iron (ASTM A47)

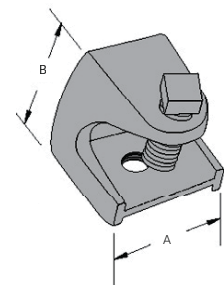


Part no.	Rod Size	B	Load lbs. (N)	Weight/Pc. Lbs. (kg)
ZF-813-1	10	10	300 (134)	0.36 (0.16)
ZF-813-2	12	12	380 (169)	0.52 (0.23)
ZF-813-3	16	16	450 (200)	0.66 (0.29)
ZF-813-4	20	12	510 (227)	0.72 (0.32)

ZF-814

Malleable Iron Beam Clamp

Safety Factor : 5
 Material: Malleable Iron (ASTM A47)



Part no.	Rod Size	B	Load lbs. (N)	Weight/Pc. Lbs. (kg)
ZF-814-1	6	28	31 150 (67)	0.22 (0.10)
ZF-814-2	10	50	50 350 (156)	0.95 (0.42)
ZF-814-3	12	60	63 400 (178)	1.96 (0.87)

Material :

(HR) Hot rolled Steel sheet :
in accordance to ASTM
A575-81

(SS) Stainless Steel :to ASTM
A240 (Type 304 & 316)

Finishes

(HDG) Hot Dip Galvanized in
Acc. To ASTM A123.(BS EN 1461)

(EP) Epoxy Painted.

(PC) Electrostatic Industrial Powder
Coating.

Design Data :

(except indicated)

Material Thickness: 1/4" (6.3mm).

Hole Size: 9/16" (14.3mm).

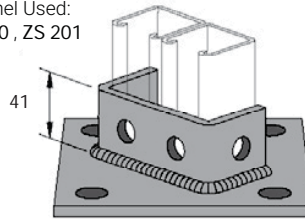
Hole Spacing From

end of fittings: 13/16" (20.6mm).

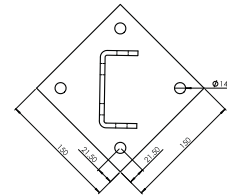
ZP 101

Four Holes Double Channel Post Base

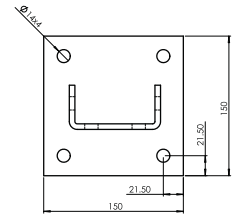
Weight :
320 lbs (1.42Kg)
Channel Used:
ZS 200 , ZS 201



ZP 101 - A



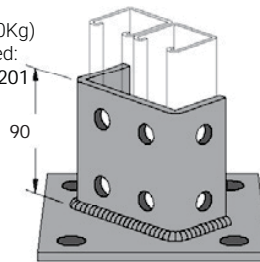
ZP 101 - B



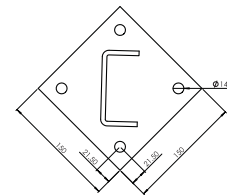
ZP 102

Eight Holes Double Channel Post Base

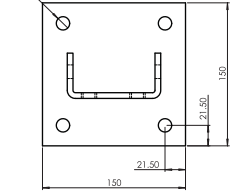
Weight :
404 lbs (1.80Kg)
Channel Used:
ZS 200 , ZS 201



ZP 102 - A



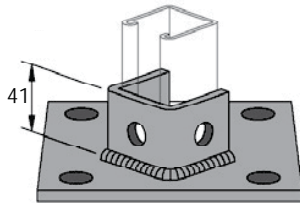
ZP 102 - B



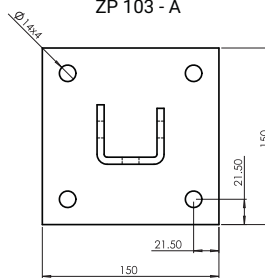
ZP 103

Three Holes Single Channel Post Base

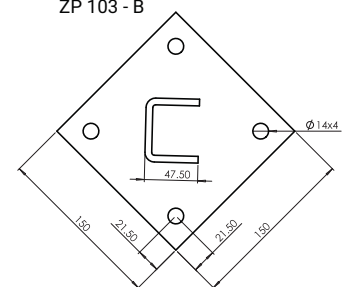
Weight :
305 lbs (1.36Kg)
Channel Used:
ZS 100 , ZS 400



ZP 103 - A



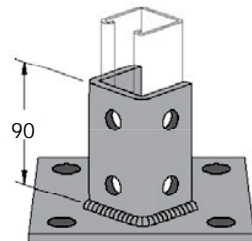
ZP 103 - B



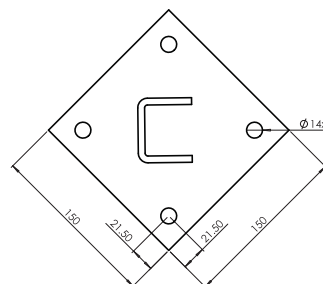
ZP 104

Six Hole Single Channel Post Base

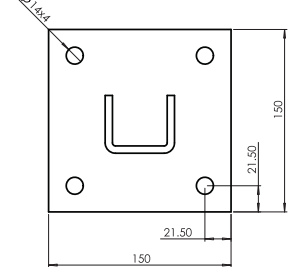
Weight :
370 lbs (1.65Kg)
Channel Used:
ZS 100 , ZS 400



ZP 104 - A



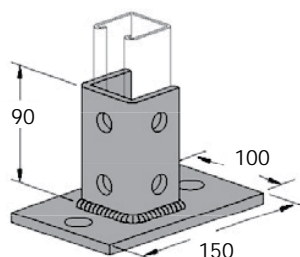
ZP 104 - B



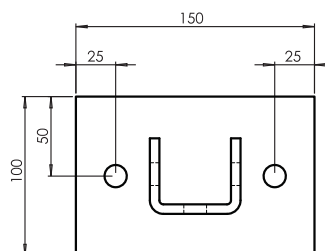
ZP 105

Six Holes Single Channel Longitudinal Post Base

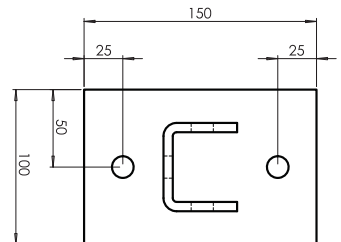
Weight :
355 lbs (1.58 Kg)
Channel Used:
ZS 100 , ZS 400



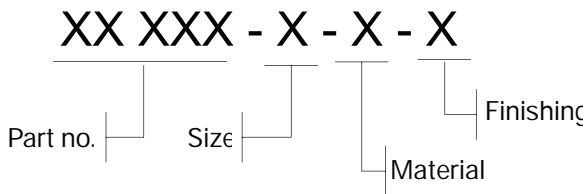
ZP 105 - A



ZP 105 - B



When Ordering , Please State Part no.
Size, Material and Finishing.



Material :

- (HR) Steel
- (SS) Stainless Steel (ss304/55316)

Finishes

- (PG) Zinc Plated: in Acc. To ASTM B633
- (HDG) Hot Dip Galvanized; in Acc. To ASTM A153.

NOTE: Materials like Bronze, Copper & etc. will be available upon request

<p>ZW 101 Hex. Head Machine Screw</p>  <p>Size M6 x L M8 x L M10 x L M12 x L</p> <p>L: Length</p>	<p>ZW 102 Hex. Slotted Head Screw</p>  <p>Size M6 x L M8 x L M10 x L M12 x L</p> <p>L: Length</p>	<p>ZW 103 Round Slotted Head Screw</p>  <p>Size M6 x L M8 x L M10 x L M12 x L</p> <p>L: Length</p>	<p>ZW 104 Square Head Pointed Screw</p>  <p>Size M6 x L M8 x L M10 x L M12 x L</p> <p>L: Length</p>
<p>ZW 105 Flat Washer</p>  <p>Size M6 M8 M10 M12</p>	<p>ZW 106 Flat Fended Washer</p>  <p>Size M6 M8 M10 M12</p>	<p>ZW 107 Lock Washer</p>  <p>Size M6 M8 M10 M12</p>	<p>ZW 108 Hex. Nut</p>  <p>Size M6 M8 M10 M12</p>
<p>ZW 109 Threaded Rod</p>  <p>Size M6 M8 M10 M12 M16 M20</p>	<p>ZW 110 Rod Coupling</p>  <p>Size M6 M8 M10 M12 M16 M20</p>	<p>ZW 111 Drop In Anchor</p>  <p>Size M6 M8 M10 M12 M16</p>	<p>ZW 112 Wedge Anchor</p>  <p>Size M6 x L M8 x L M10 x L M12 x L</p>
<p>ZW 113</p>  <p>Size M6 M8 M10 M12</p>	<p>ZW 114 Short Spring Channel Nut</p>  <p>Size M6 M8 M10 M12</p>	<p>ZW 115 Long Spring Channel Nut</p>  <p>Size M6 M8 M10 M12</p>	<p>ZW 116 Spring Channel Nut Stud</p>  <p>Size M6 M8 M10 M12</p>
<p>ZW 117 T - Bolt</p>  <p>Size M6 x L M8 x L M10 x L M12 x L</p>	<p>ZW 118 Flanged T- Bolt</p>  <p>Size M6 x L M8 x L M10 x L M12 x L</p>	<p>ZW 119 Square T - Bolt</p>  <p>Size M6 x L M8 x L M10 x L M12 x L</p>	<p>ZW 120 Truss Head Bolt</p>  <p>Size M6 x L M8 x L M10 x L M12 x L</p>