



ZETA Tray

CABLE TRAY

ICMS cable tray system including Fittings and accessories is manufactured With return flange in a standard length of 2.44Mtr and 3Mtr, according to the following Specifications and standards:

Types of cable tray :

- Perforated bottom trays (Oval Perforation)
- Solid bottom trays

Classifications:

- Medium Duty
- Heavy Duty
- Extra Heavy Duty

Construction Material:

- Cold Rolled Steel Sheets, to BS 1449
- Aluminum Sheets.
- Stainless Steel Sheets SS304, and SS316.
- Aluzinc Steel Sheet, to ASTM A 792

Product Finish:

- Hot Dip Galvanized to BS EN 1461 (formerly BS 729)
- Industrial Epoxy Powder Coating.

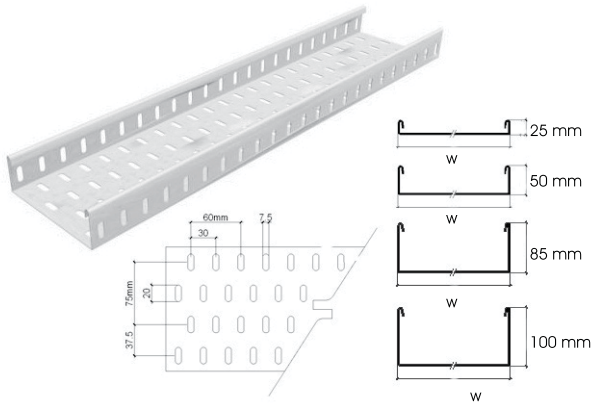
Related Standards:

- BS EN 61537: 2007 Cable Management Cable Tray System.
- NEMA VE-1
- QCS

Note: Other sizes and thicknesses not mentioned in the catalogue
Are available upon request

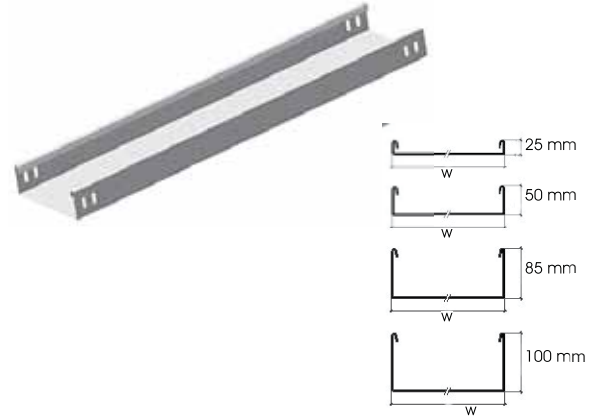
Type CTP

Perforated Cable tray



Type CTS

Solid Cable tray



Straight Tray Ordering Way :

Example:

CTP 50 - 300 - HG

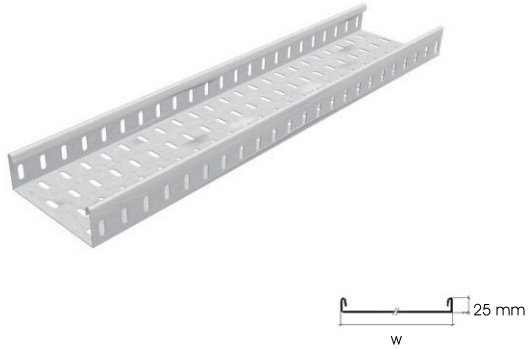
Model	Side Height (mm)	Width (mm)	Material/Finish.
CTP: Cable Tray Perforated	25	50	PG: Pre galvanized Steel
CTS: Cable Tray Solid	50	75	HG: Hot Dip Galvanized
	85	100	AL: Aluminum
	100	150	S4: Stainless Steel 304
		225	S6: Stainless Steel 316
		300	CA: Corten-A Steel
		400	AZ: Aluzinc
		450	HP: Hot Dip Galvanized & Epoxy Powder Coated
		600	
		750	
	900		

* For other finishing, consult factory

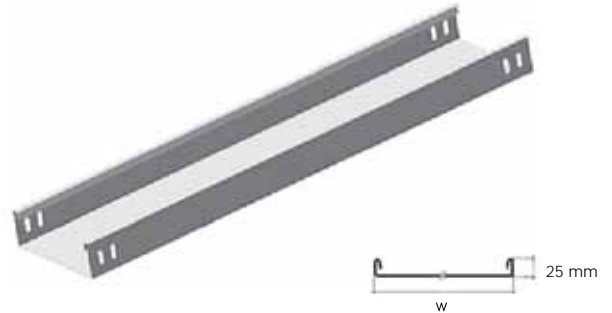
Note:

- Cable Tray Standard Length IS 2.44 Mtr, 3.00 Mtr length is Available Upon Request
- Cable Tray Material Thickness: 1.00 mm, 1.20 mm, 1.50 mm, and 2.00 mm.

CTP: Perforated Cable Tray



CTS: Solid Cable Tray



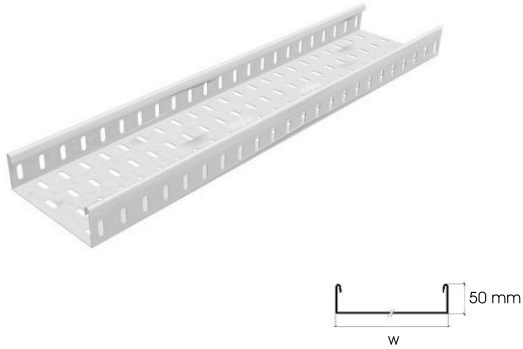
Part Number	Width (mm)	Weight (Kg/Mtr)
CTP 25-50-M/F	50	0.97
CTP 25-75-M/F	75	1.17
CTP 25-100-M/F	100	1.38
CTP 25-150-M/F	150	1.78
CTP 25-225-M/F	225	2.39
CTP 25-300-M/F	300	4.50
CTP 25-400-M/F	400	5.71
CTP 25-450-M/F	450	6.32
CTP 25-600-M/F	600	8.14
CTP 25-750-M/F	750	9.96
CTP 25-900-M/F	900	11.79

Part Number	Width (mm)	Weight (Kg/Mtr)
CTS 25-50-M/F	50	1.09
CTS 25-75-M/F	75	1.29
CTS 25-100-M/F	100	1.52
CTS 25-150-M/F	150	1.96
CTS 25-225-M/F	225	2.63
CTS 25-300-M/F	300	4.95
CTS 25-400-M/F	400	6.28
CTS 25-450-M/F	450	6.95
CTS 25-600-M/F	600	8.96
CTS 25-750-M/F	750	10.96
CTS 25-900-M/F	900	12.96

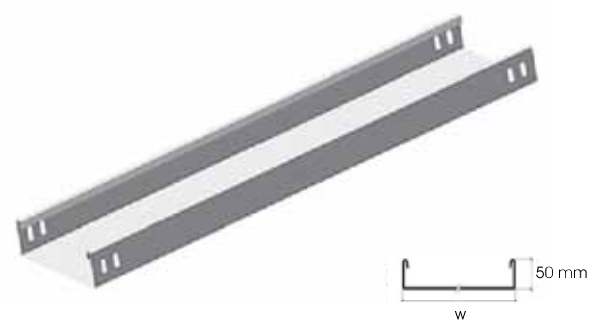
Note:

- M/F: Please Specify the Type of Material and Finish
- Please Specify the Thickness of Cable Tray

CTP: Perforated Cable Tray



CTS: Solid Cable Tray



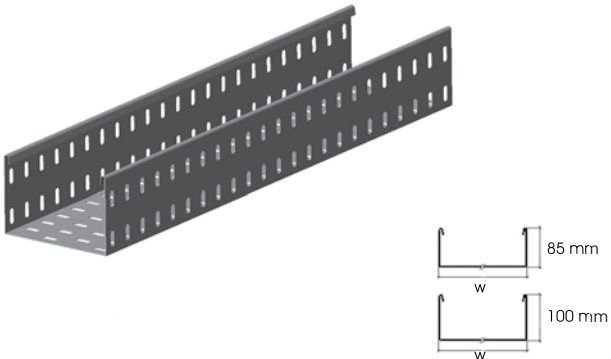
Part Number	Width (mm)	Weight (Kg/Mtr)
CTP 50-50-M/F	50	2.30
CTP 50-75-M/F	75	2.60
CTP 50-100-M/F	100	2.70
CTP 50-150-M/F	150	3.50
CTP 50-225-M/F	225	4.30
CTP 50-300-M/F	300	5.20
CTP 50-400-M/F	400	8.42
CTP 50-450-M/F	450	9.20
CTP 50-600-M/F	600	11.60
CTP 50-750-M/F	750	14.00
CTP 50-900-M/F	900	16.18

Part Number	Width (mm)	Weight (Kg/Mtr)
CTS 50-50-M/F	50	2.90
CTS 50-75-M/F	75	3.20
CTS 50-100-M/F	100	3.40
CTS 50-150-M/F	150	4.10
CTS 50-225-M/F	225	5.01
CTS 50-300-M/F	300	6.00
CTS 50-400-M/F	400	9.27
CTS 50-450-M/F	450	10.16
CTS 50-600-M/F	600	12.83
CTS 50-750-M/F	750	15.50
CTS 50-900-M/F	900	18.18

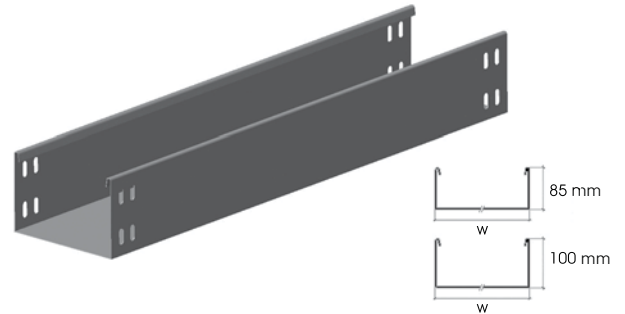
Note:

- M/F: Please Specify the Type of Material and Finish
- Please Specify the Thickness of Cable Tray

CTP: Perforated Cable Tray



CTS: Solid Cable Tray



85 mm

Side Height

Part Number	Width (mm)	Weight (Kg/Mtr)
CTP 85-100-M/F	100	3.52
CTP 85-150-M/F	150	4.13
CTP 85-250-M/F	225	5.04
CTP 85-300-M/F	300	5.95
CTP 85-400-M/F	400	9.54
CTP 85-450-M/F	450	10.73
CTP 85-600-M/F	600	12.80
CTP 85-750-M/F	750	15.23
CTP 85-900-M/F	900	17.66

Part Number	Width (mm)	Weight (Kg/Mtr)
CTS 85-100-M/F	100	3.9
CTS 85-150-M/F	150	4.54
CTS 85-250-M/F	225	5.55
CTS 85-300-M/F	300	6.54
CTS 85-400-M/F	400	10.52
CTS 85-450-M/F	450	11.40
CTS 85-600-M/F	600	14.08
CTS 85-750-M/F	750	16.75
CTS 85-900-M/F	900	19.42

100 mm

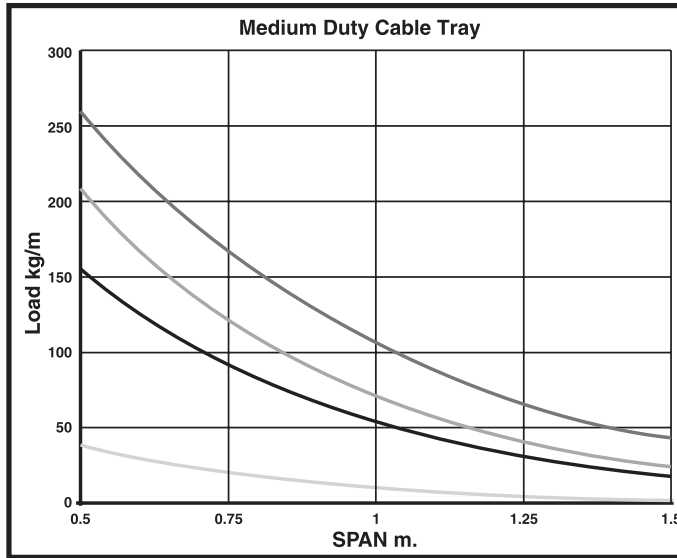
Side Height

Part Number	Width (mm)	Weight (Kg/Mtr)
CTP 100-100-M/F	100	3.89
CTP 100-150-M/F	150	4.50
CTP 100-250-M/F	225	5.41
CTP 100-300-M/F	300	6.32
CTP 100-400-M/F	400	10.04
CTP 100-450-M/F	450	10.90
CTP 100-600-M/F	600	13.28
CTP 100-750-M/F	750	15.71
CTP 100-900-M/F	900	18.14

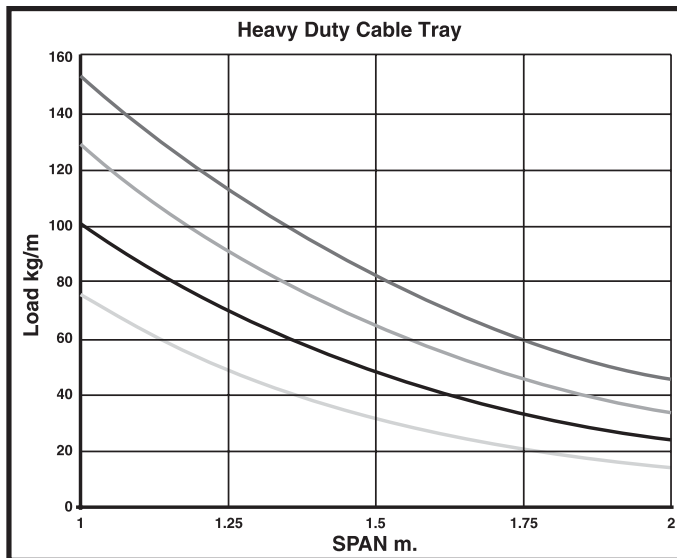
Part Number	Width (mm)	Weight (Kg/Mtr)
CTS 100-100-M/F	100	4.27
CTS 100-150-M/F	150	4.95
CTS 100-250-M/F	225	5.95
CTS 100-300-M/F	300	6.75
CTS 100-400-M/F	400	11.04
CTS 100-450-M/F	450	11.94
CTS 100-600-M/F	600	14.61
CTS 100-750-M/F	750	17.29
CTS 100-900-M/F	900	19.96

Note:

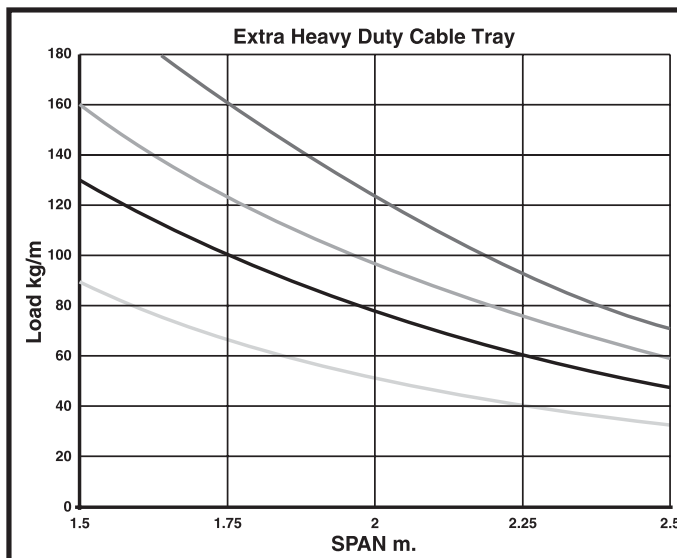
- M/F: Please Specify the Type of Material and Finish
- Please Specify the Thickness of Cable Tray



- 750/900 wide
- 600 wide
- 300/450 wide
- 50/225 wide



- 750/900 wide
- 300/600 wide
- 150/225 wide
- 50/100 wide



- 750/900 wide
- 450/600 wide
- 225/300 wide
- 100/150 wide

Tray Fittings Ordering Way :

Example:

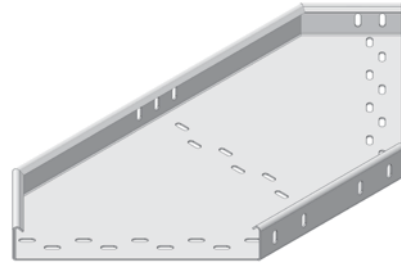
CTP B90 50 - 300 - HG

Model	Type	Side Height (mm)	Width (mm)	Material/Finish
CTP: Cable Tray Perforated	B90-90 Deg Hor. Bend	25	50	PG: Pre galvanized Steel
CTS: Cable Tray Solid	B60-60 Deg Hor. Bend	50	75	HG: Hot Dip Galvanized
	B45-45 Deg Hor. Bend	85	100	AL: Aluminum
	B30-30 Deg Hor. Bend	100	150	S4: Stainless Steel 304
	T-Tee		225	S6: Stainless Steel 316
	X-Cross		300	CA: Corten-A Steel
	RI90-90 Deg Inside Riser		400	AZ: Aluzinc
	RI60-60 Deg Inside Riser		450	HP: Hot Dip Galvanized & Epoxy Powder Coated
	RI45-45 Deg Inside Riser		600	
	RI30-30 Deg Inside Riser		750	* For other finishing, consult factory
	RO90-90 Deg Outside Riser		900	
	RO60-60 Deg Outside Riser			
	RO45-45 Deg Outside Riser			
	RO30-30 Deg Outside Riser			
	VAR-Vertical Adj. Riser			
	RS-Standard Reducer			
	RR-Right Hand Reducer			
	RL-Left Hand Reducer			
	AOB - Add - On Branch			
	CVT - Cable tray vertical Tee			

B90

90 Deg Hor. Bend

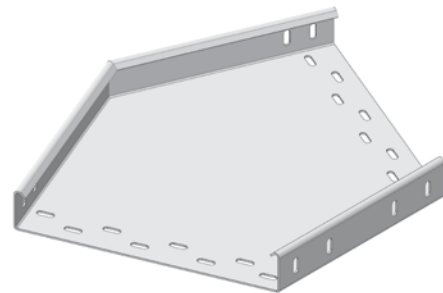
Prefix	H (mm)	W (mm)	M/F Material
CTP - B90 Perforated Type 90 Deg Bend	25	50	PG
		75	
		100	
		150	
		225	
CTS - B90 Solid Type 90 Deg Bend	100	300	S4
		400	S6
		450	CA
		600	AZ
		750	HP
		900	



B45

45 Deg Hor. Bend

Prefix	H (mm)	W (mm)	M/F Material
CTP - B45 Perforated Type 45 Deg Bend	25	50	PG
		75	
		100	
		150	
		225	
CTS - B45 Solid Type 45 Deg Bend	100	300	S4
		400	S6
		450	CA
		600	HP
		750	
		900	

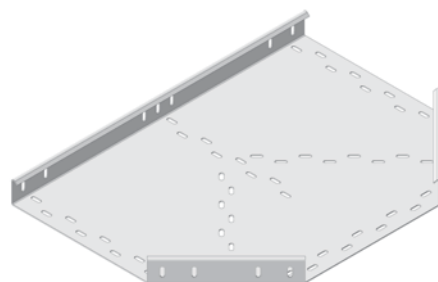


NOTE: 30° & 60° Hor. Bends are also available upon request
Part No. B30-30 Degree Hor. Bend and B60-60 Degree Hor. Bend

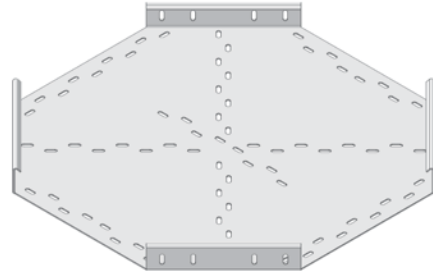
T

Tee

Prefix	H (mm)	W (mm)	M/F Material
CTP - T Perforated Type Tee	25	50	PG
		75	
		100	
		150	
		225	
CTS - T Solid Type Tee	100	300	S4
		400	S6
		450	CA
		600	HP
		750	
		900	



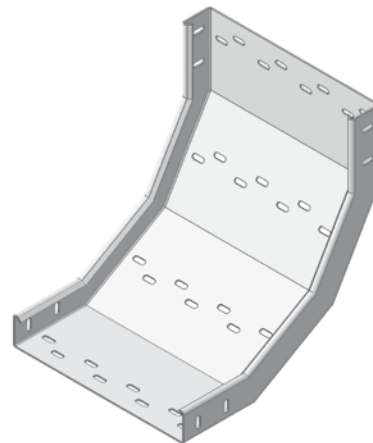
Prefix	H (mm)	W (mm)	M/F Material
CTP - X Perforated Type Cross	25	50	PG HG AL S4 S6 CA AZ HP
		75	
		100	
		150	
		225	
CTS - X Solid Type Cross	100	300	
		400	
		450	
		600	
		750	
		900	



RI90

90 Deg Inside Riser

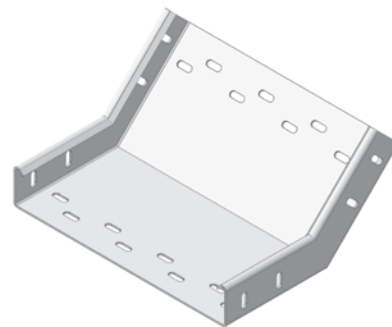
Prefix	H (mm)	W (mm)	M/F Material
CTP - RI90 Perforated Type 90 Deg Inside Riser	25	50	PG HG AL S4 S6 CA AZ HP
		75	
		100	
		150	
		225	
CTS - RI90 Solid Type 90 Deg Inside Riser	100	300	
		400	
		450	
		600	
		750	
		900	



RI45

45 Deg Inside Riser

Prefix	H (mm)	W (mm)	M/F Material
CTP - RI45 Perforated Type 45 Deg Inside Riser	25	50	PG HG AL S4 S6 CA AZ HP
		75	
		100	
		150	
		225	
CTS - RI45 Solid Type 45 Deg Inside Riser	100	300	
		400	
		450	
		600	
		750	
		900	

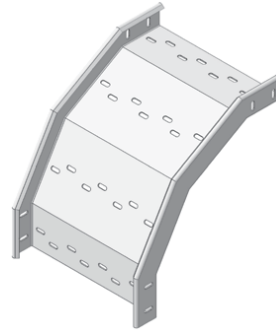


NOTE: 30° & 60° Ver. Inside Risers are also available upon request
Part No. RI30-30 Ver. Inside Riser and RI60-60 Ver. Inside Riser

R090

90 Deg Outside Riser

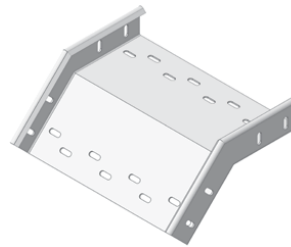
Prefix	H (mm)	W (mm)	M/F Material
CTP -R090 Perforated Type 45 Deg Outside Riser	25	50	PG
		75	
		100	
		150	
CTS - R090 Solid Type 45 Deg Outside Riser	100	225	AL
		300	S4
		400	S6
		450	CA
		600	AZ
		750	HP
		900	



R045

45 Deg Outside Riser

Prefix	H (mm)	W (mm)	M/F Material
CTP -R045 Perforated Type 45 Deg Outside Riser	25	50	PG
		75	
		100	
		150	
CTS - R045 Solid Type 45 Deg Outside Riser	100	225	AL
		300	S4
		400	S6
		450	CA
		600	AZ
		750	HP
		900	

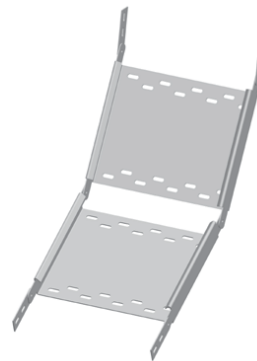


NOTE: 30° & 60° Ver. Outside Risers are also available upon request
Part No. R030-30 Ver. Outside Riser and R060-60 Ver. Outside Riser.

VAR

Vertical Adjustable Riser

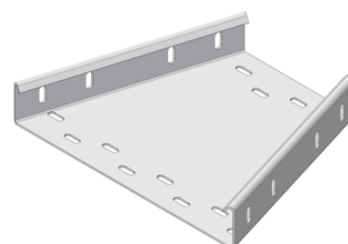
Prefix	H (mm)	W (mm)	M/F Material
CTP -VAR Perforated Type Vertical Adj. Riser	25	50	PG
		75	
		100	
		150	
CTS - VAR Solid Type Vertical Adj. Riser	100	225	AL
		300	S4
		400	S6
		450	CA
		600	AZ
		750	HP
		900	



RS

Standard Reducer

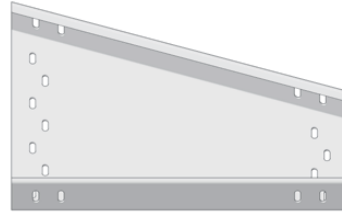
Prefix	H (mm)	W1 (mm)	W2 (mm)	M/F Material
CTP - RS Perforated Type Reducer	25	50	50	PG
		75	75	
		100	100	
		150	150	
CTS - RS Solid Type Reducer	100	225	225	AL
		300	300	S4
		400	400	S6
		450	450	CA
		600	600	AZ
		750	750	HP
		900	900	



RR

Right Hand Reducer

Prefix	H (mm)	W1 (mm)	W2 (mm)	M/F Material
CTP - RR Perforated Type Right Hand Reducer	25	50	50	PG
		75	75	
		100	100	
		150	150	
		225	225	
CTS - RR Solid Type Right Hand Reducer	100	300	300	S4
		400	400	S6
		450	450	CA
		600	600	AZ
		750	750	HP
		900	900	



RL

Left Hand Reducer

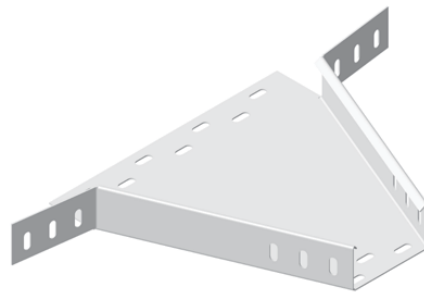
Prefix	H (mm)	W1 (mm)	W2 (mm)	M/F Material
CTP - RL Perforated Type Left Hand Reducer	25	50	50	PG
		75	75	
		100	100	
		150	150	
		225	225	
CTS - RL Solid Type Left Hand Reducer	100	300	300	S4
		400	400	S6
		450	450	CA
		600	600	AZ
		750	750	HP
		900	900	



AOB

Add - on Branch

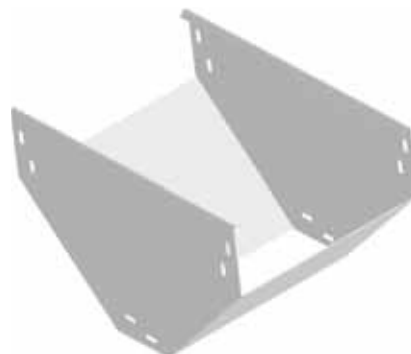
Prefix	H (mm)	W (mm)	M/F Material
CTP - AOB Perforated Type Add - on Branch	25	50	PG
		75	
		100	
		150	
		225	
CTS - AOB Solid Type Add - on	100	300	S4
		400	S6
		450	CA
		600	AZ
		750	HP
		900	

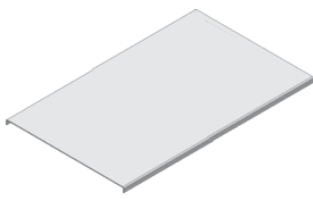


CVT

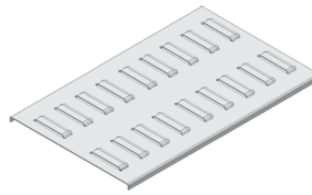
Cable Tray vertical TEE

Prefix	H (mm)	W (mm)	M/F Material
CTP - CVT Perforated Type Tee	25	50	PG
		75	
		100	
		150	
		225	
CTS - CVT Solid Type Tee	100	300	S4
		400	S6
		450	CA
		600	AZ
		750	HP
		900	





SCT Type: Solid Cover



VCT Type: Louver Cover

Straight Cover Ordering Way :

Example:

* No. of Louvers varies as per width

CTP - 300 - HG

Model	Width (mm)	Material/Finish.
SCT: Solid Cover	50	PG: Pre galvanized Steel
VCT: Louvered Cover	75	HG: Hot Dip Galvanized
	100	AL: Aluminum
	150	S4: Stainless Steel 304
	225	S6: Stainless Steel 316
	300	CA: Corten-A Steel
	400	AZ: Aluzinc
	450	HP: Hot Dip Galvanized & Epoxy Powder Coated
	600	
	750	
	900	

* For other finishing, consult factory

Fittings Cover Ordering Way :

Example:

SCT - B90 - 300 - HG

Model	Fitting Type	Width (mm)	Material/Finish.
SCT: Solid Cover	B 90	50	PG: Pre galvanized Steel
VCT: Louvered Cover	B 45	75	HG: Hot Dip Galvanized
	T	100	AL: Aluminum
	X	150	S4: Stainless Steel 304
	RI 90	225	S6: Stainless Steel 316
	RI 45	300	CA: Corten-A Steel
	RO 90	400	AZ: Aluzinc
	RO 45	450	HP: Hot Dip Galvanized & Epoxy Powder Coated
	RS	600	
	RR	750	
	RL	900	

* For other finishing, consult factory

STCS

Standard Straight Coupler

Part Number: STCS-H
H: Cable Tray Height

Height	Catalogue No
25	STCS - 25 - M/F
50	STCS - 50 - M/F
85	STCS - 85 - M/F
100	STCS - 100 - M/F



EXC

External Coupler

Part Number: EXC-H
H: Cable Tray Height

Height	Catalogue No
25	EXC - 25 - M/F
50	EXC - 50 - M/F
85	EXC - 85 - M/F
100	EXC - 100 - M/F

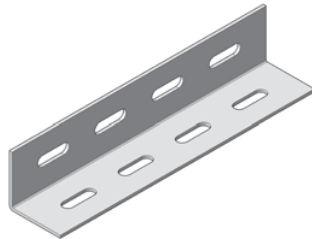


STCL

L - Type Straight Coupler

Part Number: STCL-H
H: Cable Tray Height

Height	Catalogue No
25	STCL - 25 - M/F
50	STCL - 50 - M/F
85	STCL - 85 - M/F
100	STCL - 100 - M/F

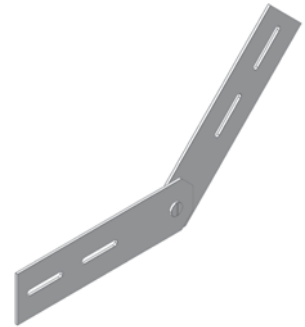


VEC

Vertical Adjustable Coupler

Part Number: VEC-H
H: Cable Tray Height

Height	Catalogue No
25	VEC - 25 - M/F
50	VEC - 50 - M/F
85	VEC - 85 - M/F
100	VEC - 100 - M/F



EPC

Expansion Coupler

Part Number: EPC-H
H: Cable Tray Height

Height	Catalogue No
25	EPC - 25 - M/F
50	EPC - 50 - M/F
85	EPC - 85 - M/F
100	EPC - 100 - M/F



REC

Reducing Coupler

Part Number: REC-W1/W2 - H
H: Cable Tray Height



CRC

Cranked Coupler

Part Number: CRC-H
H: Cable Tray Height

Height	Catalogue No
25	CRC - 25 - M/F
50	CRC - 50 - M/F
85	CRC - 85 - M/F
100	CRC - 100 - M/F

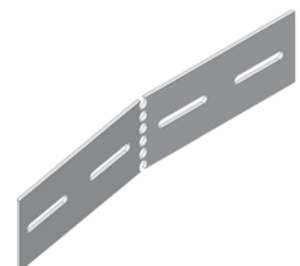


HAC

Horizontal Adjustable Coupler

Part Number: HAC-H
H: Cable Tray Height

Height	Catalogue No
25	HAC - 25 - M/F
50	HAC - 50 - M/F
85	HAC - 85 - M/F
100	HAC - 100 - M/F



DO Drop Out

Part Number: DO-W
W: Cable Tray Width



BE Blind End

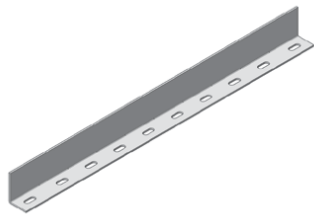
Part Number: BE-W
W: Cable Tray Width



HOBS Horizontal Barrier Straight

Part Number: HOBS-H
H: Cable Tray Height

Height	Catalogue No
25	HOBS - 25 - M/F
50	HOBS - 50 - M/F
85	HOBS - 85 - M/F
100	HOBS - 100 - M/F



ECS Earth Continuity Strap

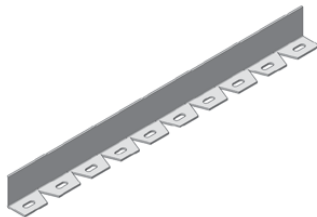
Part Number: ECS
Material: Copper
Finish: Electro Tinned



HOBF Horizontal Barrier Fitting

Part Number: HOBF-H
H: Cable Tray Height

Height	Catalogue No
25	HOBF - 25 - M/F
50	HOBF - 50 - M/F
85	HOBF - 85 - M/F
100	HOBF - 100 - M/F



FP Fish Plate

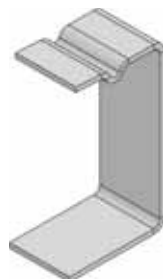
Part Number: FP-W-M/F
W: Cable Tray Width



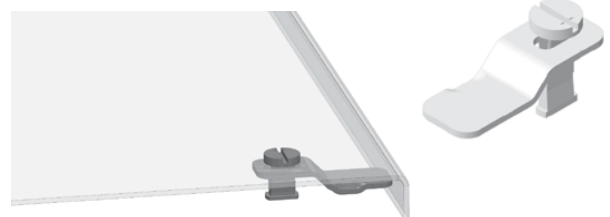
COB Cover Bracket

Part Number: COB-H
H: Cable Tray Height

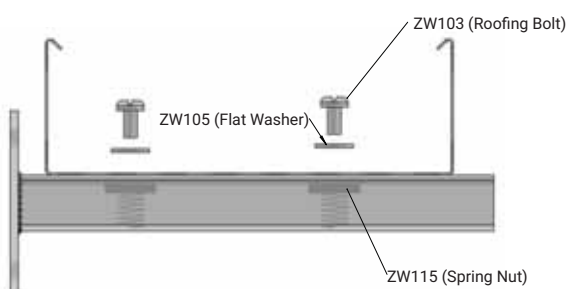
Height	Catalogue No
25	COB - 25
50	COB - 50
85	COB - 85
100	COB - 100



CLK Cover Lock



Hold Down Hardware



HDCT Hold Down Clamp

Height	Catalogue No
25	HDCT - 25 - M/F
50	HDCT - 50 - M/F
85	HDCT - 85 - M/F
100	HDCT - 100 - M/F

Part Number: HDCT-H-M/F
H: Cable Tray Height

